



Houston Color Guard Regional

Site:

Magnolia West High School
42202 FM 1774
Magnolia, TX 77.55

Dimensions: 100' x 60'

Front Side Bleacher Rows: 20

Seating Capacity: appx 1000

Approximate Ceiling Height: appx 25 ft

There are no stairs to contend with in the competition area.

There are raised basketball hoops above the competition floor.

Color guards do not enter the competition area directly from the outdoors.

There is electrical power available at the front and back sideline.

Color guards do not exit the competition area directly to the outdoors.

Hallways around the gym will be utilized for prop storage prior to the competition.

There will be a black vinyl tarp measuring appx 70'x100' covering the entire wooden performance gym floor.

There is a large commons area available for indoor floor refolding.

The distance from body to equipment warm up is approximately 2 minutes.

The distance from equipment warm up to the performance gym is less than 1 minute.

Body Warm Up

Dance Studio

Dimensions: appx 53 ft. x 30 ft.

There are no obstructions in the area.

Music may be used in body warm up at moderate levels as determined by the Contest Administrator.

Equipment Warm Up

Auxiliary Gym

Dimensions: 112 ft. X 78 ft.

Approximate Ceiling Height: 25 ft.

There are no obstructions in the area.

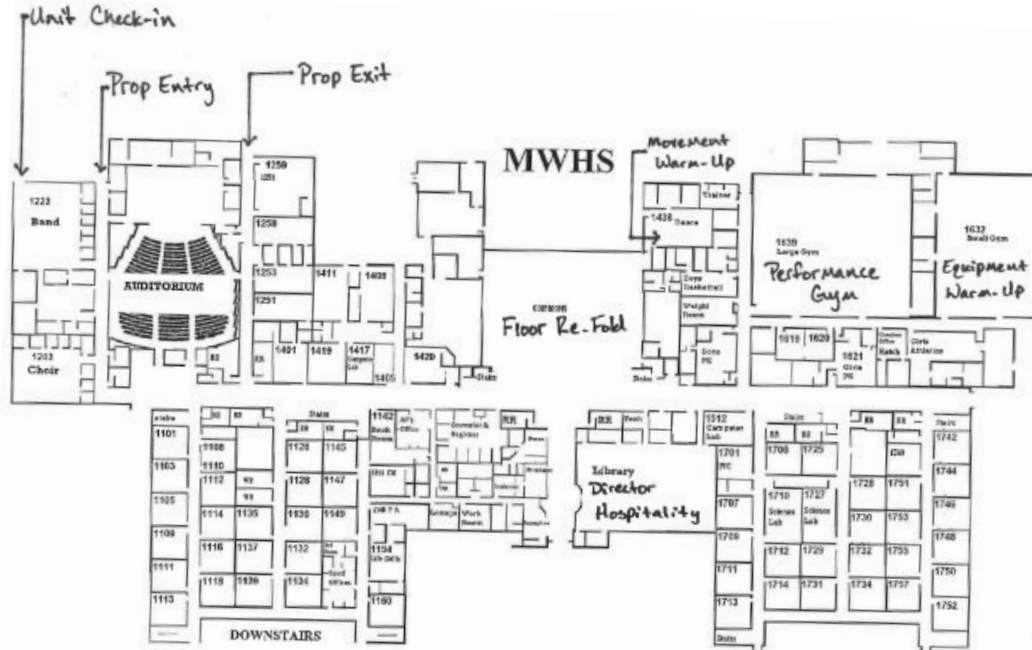
Music may be used in body warm up at moderate levels as determined by the Contest Administrator.

The above information is being provided to you in order give you the most complete information we currently have on this contest. All information is subject to change either before or during the event by contest personnel based on need.

WGI Houston at Magnolia West High School

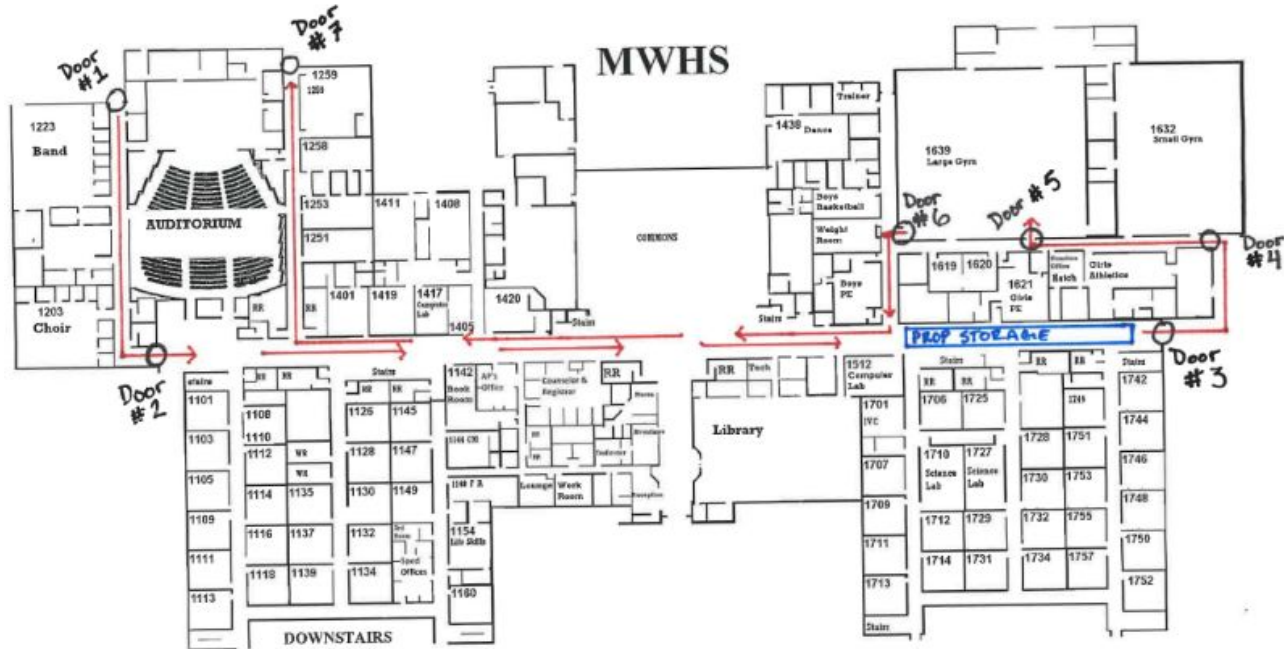
Door/Hallway Measurements and Flow

School map with general show day lay-out



Color Guard Hallways
1st & 2nd Floors

Prop flow map with doors indicated



Door #1

H: 79" W: 66.5"



Prop Entrance Hallway

H: 108.75"

W: 127"



Door #2

H: 81.5"

W: 64"



Door #2 Archway

H: 82" W: 71"

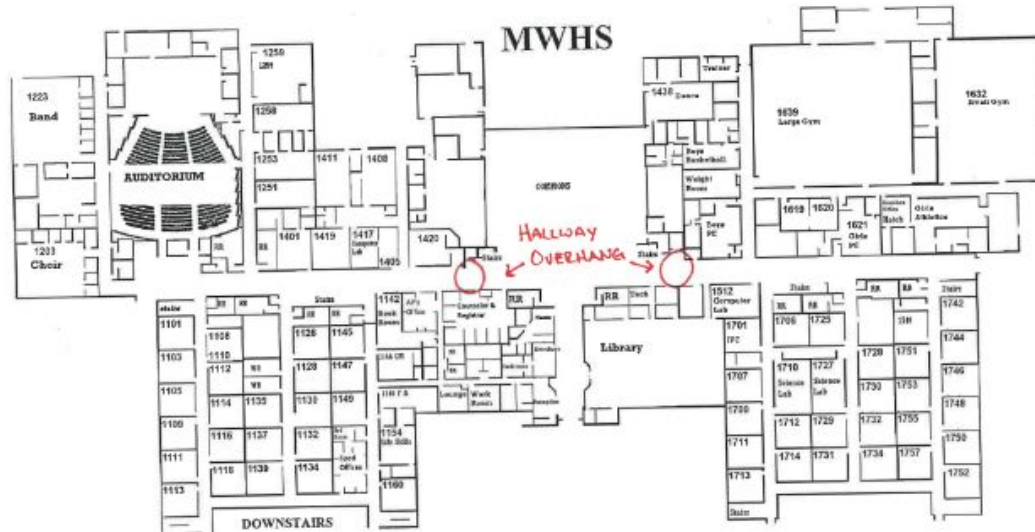


Prop Hallway

W: 200"



There are TWO overhangs in the Prop Hallway



Overhang #1

H:104.5"

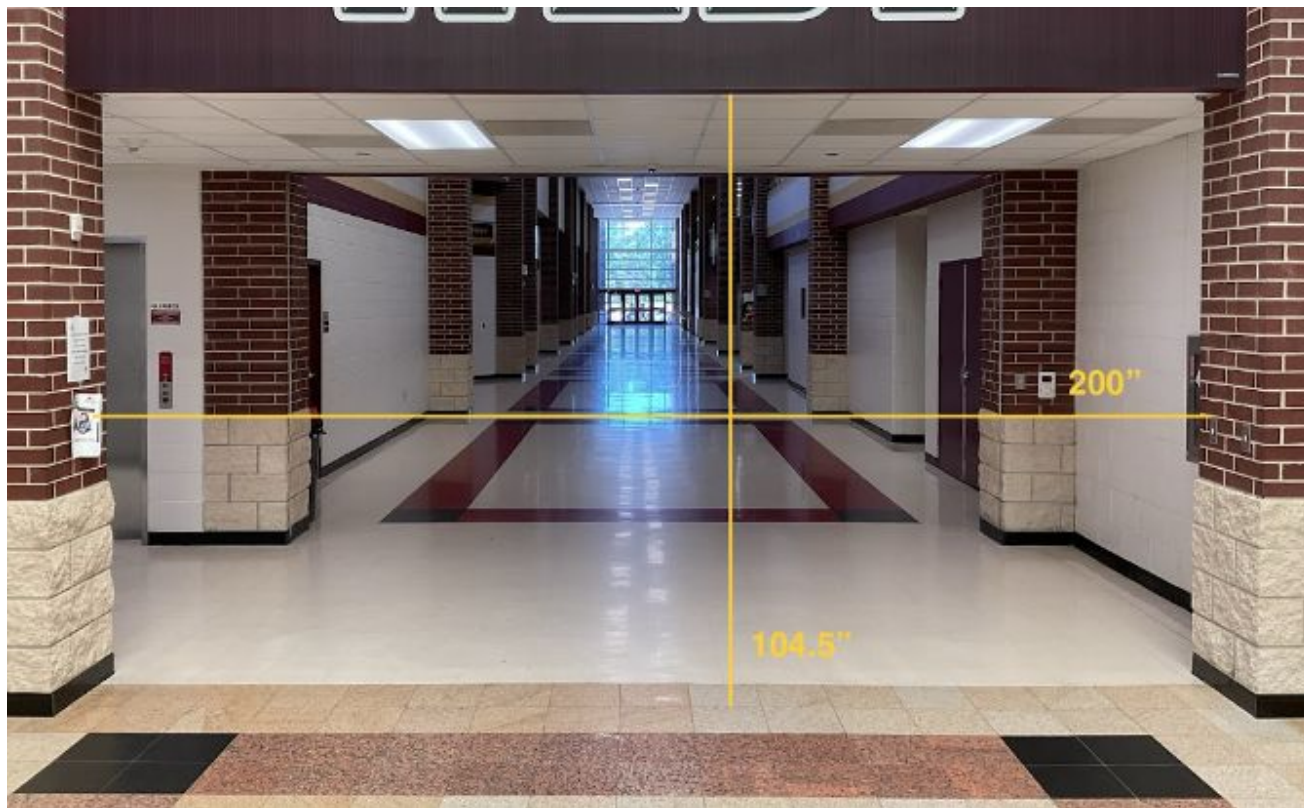
W: 200"



Overhang #2

H: 104.5"

W: 200"



Door #3 (Exit to Outside)

H: 79.25"

W: 67"



Outside portion of the show/prop flow



Door #4

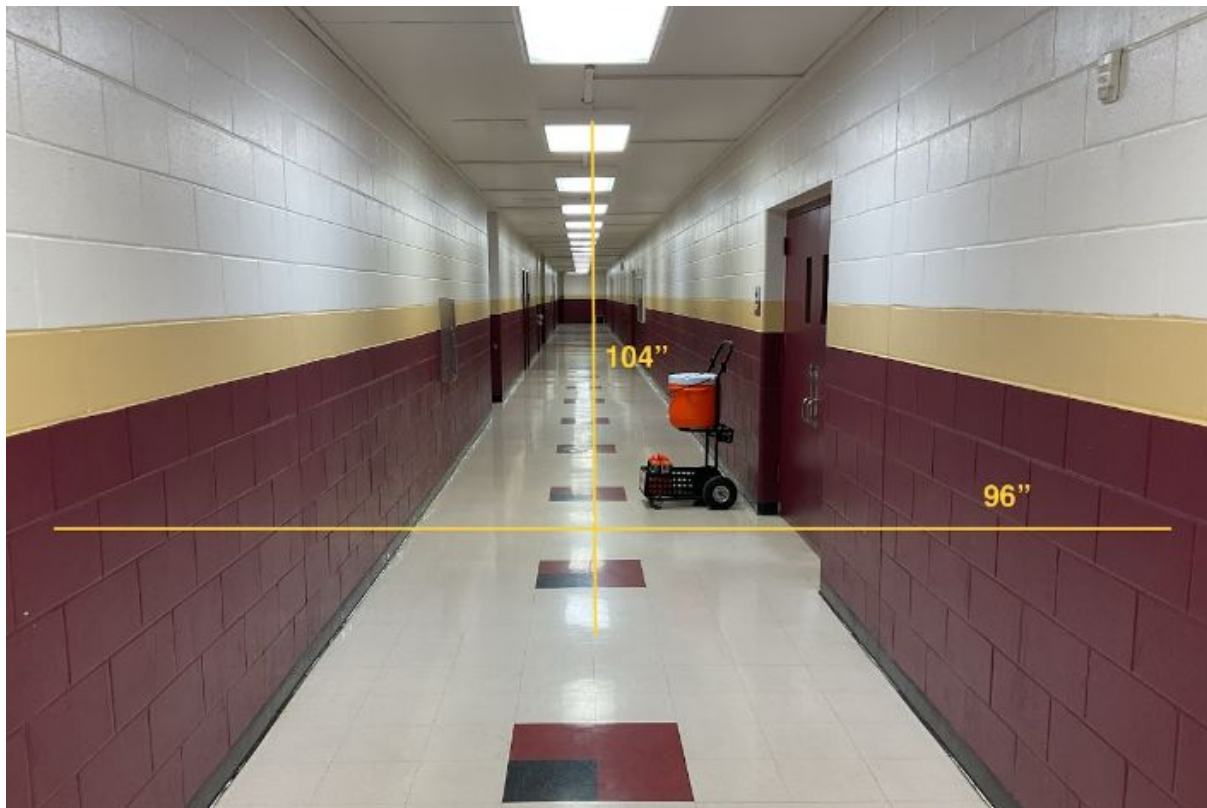
H: 79.75"

W: 61"



Prop Staging Area (pre-performance)

H: 104" W: 96"

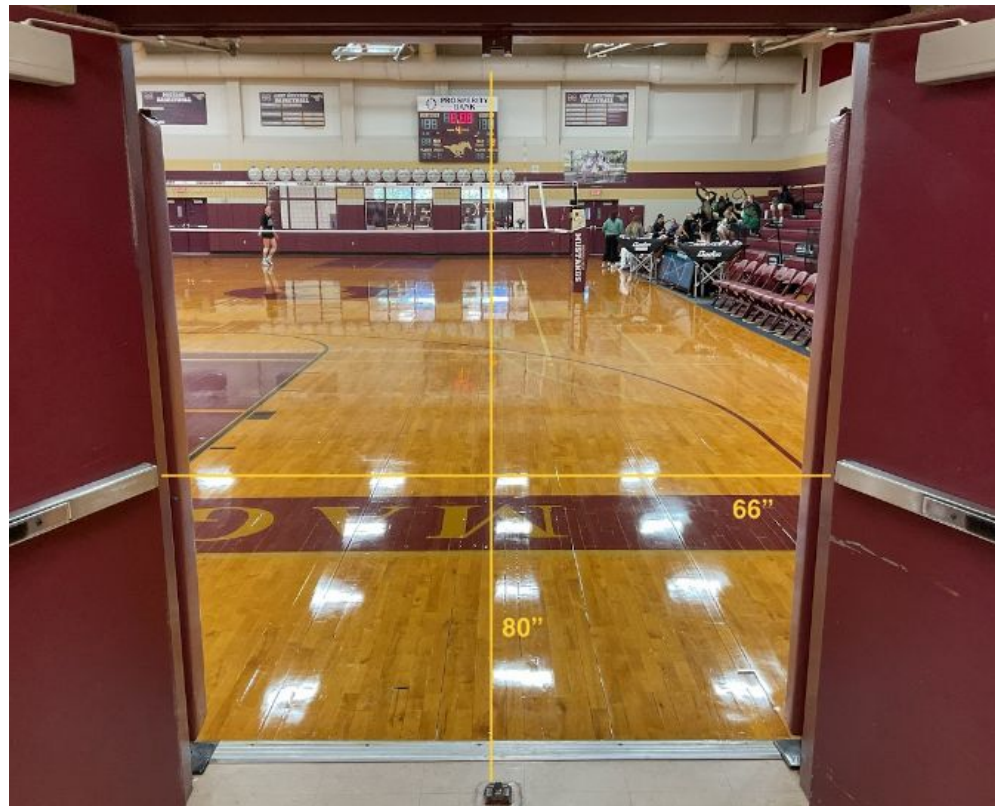


TIGHT TURN from staging hallway to performance gym



Door #5

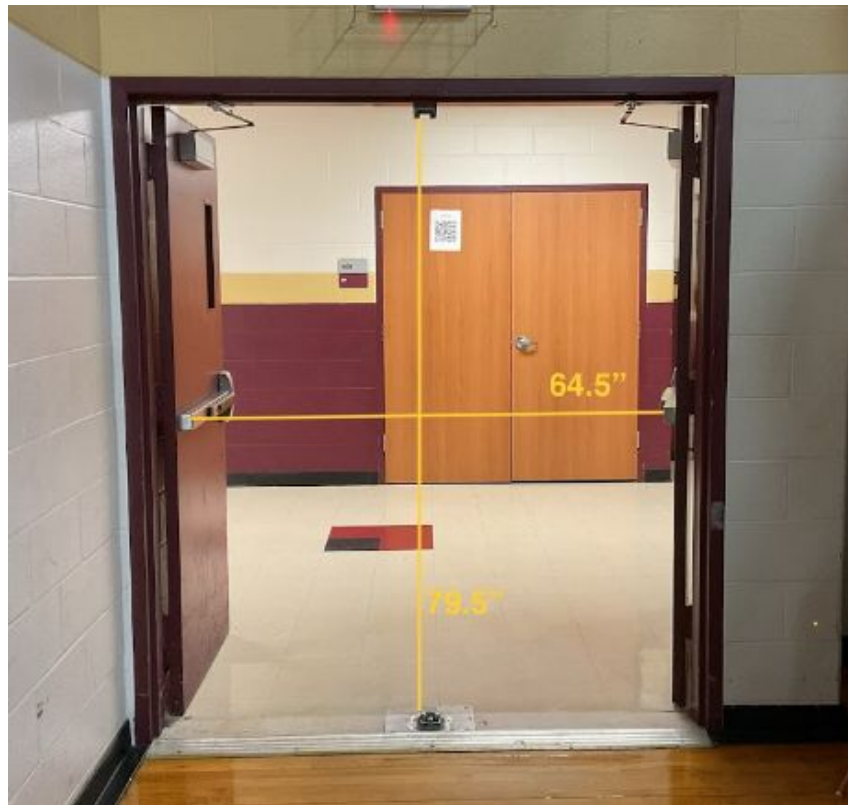
H: 80" W: 66"



Door #6

H: 79.5"

W: 64.5"



Unit Exit Hallway

H: 98.25"

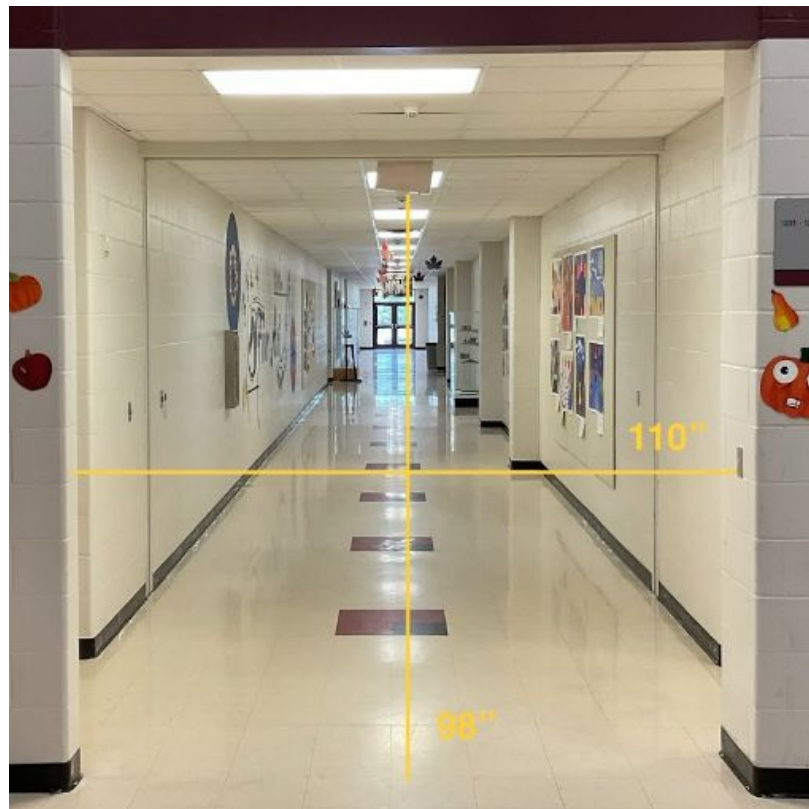
W: 118"



Prop Exit Hallway

H: 98"

W: 110"



Door #7 (Exit to outside)

H: 79.5"

W: 67"

