



WGI WINDS - JUDGE TRAINING

January 16-17, 2025

W e l c o m e !

Welcome to an exciting year of WGI WInds!

- Wayne Dillon, Director of Winds
- Glenn Fugett, Chief Judge
- Jeff Harper, Education Coordinator



W e l c o m e !

F r i d a y

7:00 PM – 7:30 PM: Welcome & State of the Activity

7:30-8:15 - Ice Breaker - Judging Art

8:15- 8:30 Break

8:30-9:15 - Content Refresher

9:15-10:00: Role of Judging and Value of a Tenth

10:00 - Fellowship



OUR MISSION



OUR MISSION

The mission of WGI Sport of the Arts is to inspire and educate young performers around the world through unparalleled competitions and events with the spirit of inclusion, personal development, and community



WGI WINDS PHILOSOPHY

PHILOSOPHY OF WGI WINDS

WGI Winds distinguishes itself by offering unique opportunities that empower and excite students. These opportunities combine music education with various visual and theatrical presentations, creating a one-of-a-kind experience.

The winds division is not a replacement but rather a supplement to traditional concert, jazz, and chamber ensembles. It is carefully designed to enhance and enrich the fundamental pillars of any scholastic music education program. WGI Winds programs offer another opportunity for members to play music, perform, and be exposed to various musical styles and approaches.

WGI believes that providing young musicians with diverse performance opportunities can elevate the quality of music education, enrich the student experience, and ignite the passion in the next generation of performers and music educators.



WGI WINDS: A DECADE OF GROWTH (2015-2026)

Surpassing Historical Peaks & Setting New Records



WINDS HIGHLIGHTS

Wayne Markworth- HOF.

Separate sites for WWC.


Clinics at Winds only Regionals.

Six Overview Judges at select Regionals.

12 Regionals with full Winds panels.

Two new CA Regionals with full panels.

UDB Beam Overview at selected Regionals.



Our role as adjudicators
must evolve with the
performer's
achievement level.

Putting a Number to Art

Apples and Oranges

How Does The Artist Feel?

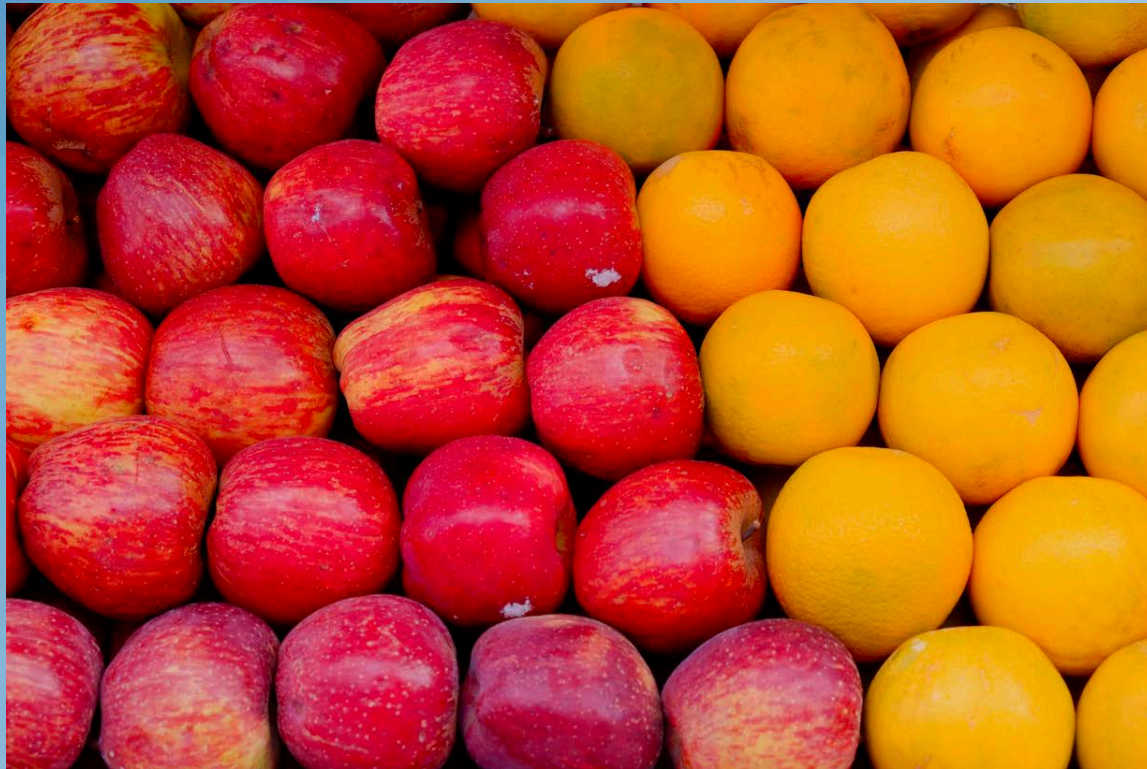
Judging My Art??

- “Not everyone is an artist, but everyone is a critic”- Marcel Duchamp (pioneer of conceptual art)
- “Art is completely subjective. It’s up to the viewer to judge whether or not it has merit”- Ken Danby (Canadian painter)
- “Art is like therapy; what comes up is what comes up. It may be dark, but that’s what comes up. You may want to keep some of it in a drawer....but NEVER JUDGE IT.”- Nick Bantock (artist and author)

But....in pageantry, we DO have to judge art

Ranking and rating

- Putting aside preferences, evaluating different styles- Apples and Oranges



Let's Give it a Try

Group Exercise

- 4 Different videos
- Watch and assign a number 1-10
- You can go back and change your number throughout the exercise.



Video 1



Video 2



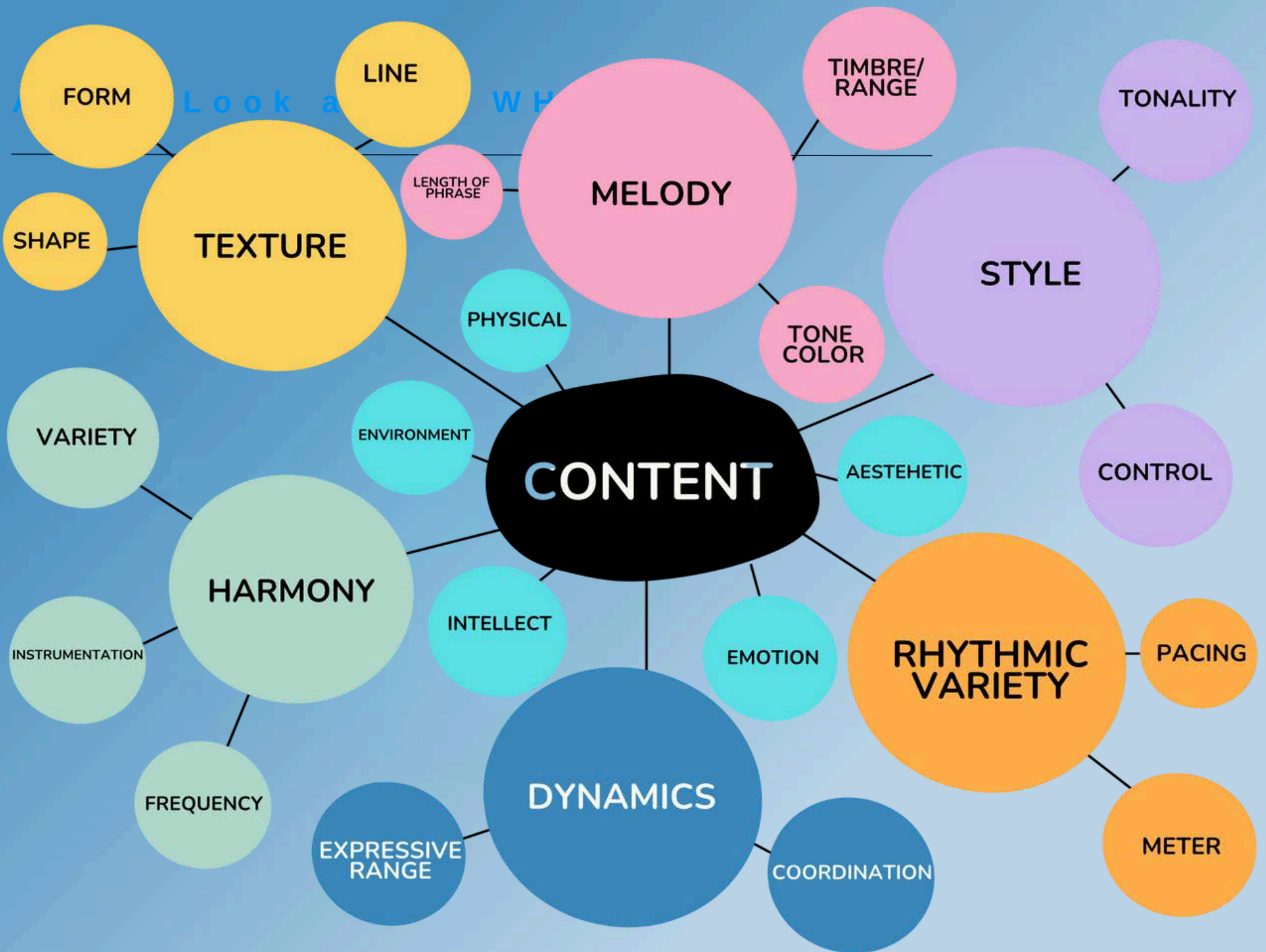
Video 3



Video 4



SHORT BREAK



WGICON 2024

WGI WINDS

Components of COMPOSITION / CONTENT

A guide to and recognizing compositional elements from the judge community

September 7, 2024 - San Francisco, CA - Jeff Harper, Presider



MELODY

Main thought	Recognizable music line
Primary focus	The primary musical or visual layer. What is most important?
Small components coming together as a larger thought	Is it recognizable? Is it clear and at the forefront?
Is it identifiable - scoring and balance and performance	The musical focus of the ensemble
The primary musical line that leads the musical focus and direction	Tone, Phrasing, shape, emotion, tempo fluctuations
Listening and audio journey	Phrasing
Appropriate balance so that it's obvious what I should be listening to	The pulse and heartbeat of the program
Horizontal and directional nuance	What you sing when the song is over, when you leave the show... the tune stuck in your head
The central musical idea or thought of a phrase or verse of a song	Consonance/dissonance
The most recent important "thing"!	Identify, creativity, variations, balanced, recognizable, style

The Essence of Melody

The Main Musical Idea

It's the recognizable tune that gets stuck in your head after the song is over.

The Primary Focus

Melody is the most important layer, guiding the listener's audio journey.

The Pulse and Heartbeat

It serves as the central life force of the musical program.

Clarity and Balance

The melody must be clearly at the forefront so it is easily identifiable.

Emotional Shape and Phrasing

It conveys emotion through tone, directional nuance, and expressive musical sentences.

Creativity and Style

A strong melody is unique and recognizable, often featuring creative variations.

Exploring Rhythmic Variety in Music

The Building Blocks of Rhythm



Pulse & Meter

The fundamental beat (pulse) and its grouping (meter) in a time signature.



Tempo & Speed

The exploration of various speeds, from fast to slow, shapes the music's energy.



Articulation & Texture

How notes are played (e.g., smoothly, detached, or accented) adds character.

The Expressive Impact



Creates Mood & Feeling

Rhythmic choices can viscerally impact the listener's emotional response.



Defines Style & Groove

Unique rhythmic patterns are key to differentiating musical styles and creating a groove.



Provides Structure & Coordination

Organizes sound into patterns, helping performers coordinate and listeners understand the music.

Mastering Musical Style: A Conductor's Guide

Core Principles of Style



Variety is the Key to Engagement

Use contrast in your programming to maintain the listener's interest.



Style Creates a Unique Identity

Your musical choices shape the specific environment and character of your ensemble.



Style is More Than Sound

It involves communication, color, and the audio-to-visual interpretation of the music.

Selection & Execution



Ensure Choices are Appropriate

Select styles that fit the repertoire, the concept, and the moment.



Commit to Correctness

Teach the style accurately to build confidence and demonstrate authentic technique.



Explore a Wide Idiomatic Range

Incorporate diverse genres like jazz, classical, latin, rock, and world music.

The Power of Dynamic Variety

The Core Components



A Full Spectrum of Sound



Utilize the full range of volume, from complete silence to powerful, bold sounds.

Contrast is Key



Purposeful shifts between loud and soft create crucial musical and visual interest.

Control & Quality Matter



Execute all dynamic levels with balance, uniformity, and clarity for maximum effect.

The Impact on Performance



Amplifies Emotional Impact

The contour of dynamics directly shapes the mood and feeling of the moment.

Boosts Audience Engagement



Variety in soundscapes prevents monotony and keeps the listener captivated.

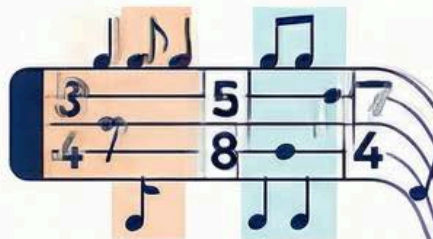
Tells a Sonic Story



Thoughtful phrasing and dynamic shifts guide the audience on a memorable journey.

The Power of Metric Variety in Music

THE COMPONENTS OF METRIC VARIETY



Varied Time Signatures & Rhythms

Incorporate diverse meters and rhythmic patterns to avoid monotony.

Nuanced Speed & Tempo

Play with the pace of the music to create different styles and moods.



Diverse Pulse & Feel

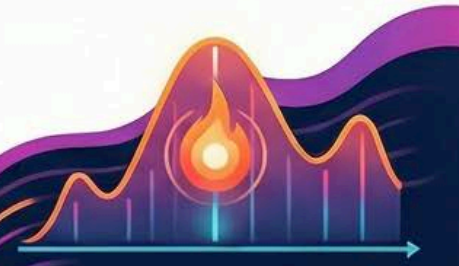
Explore a range of pulse decisions to offer different opportunities for groove.



THE IMPACT OF METRIC VARIETY

Controls Pacing and Energy

Build and release tension to guide the listener's emotional journey.



Maintains Audience Interest

Adds an element of surprise that keeps the performance captivating.



Increases Percussive Effect

The use of varied speed and time is especially appreciated by percussionists.



Visualizing Music: How Line & Shape Create Impact

The Core Principles: Building Blocks of Design

The Elements of Design are the Building Blocks

They are used to create compositions and interpret musical content for performers.

Line is the Strongest Design Principle

It creates focus, carrying the ensemble with its dynamic and harmonic shape.

Start with "What It Is"

Help performers understand their part in establishing, maintaining, and manipulating these elements.

The Impact: Shaping the Musical Experience

Providing Direction and Structure

These elements guide how melody and harmony evolve throughout the performance.

Crafting an Emotional Context

Create emotional variety through well-researched and knowledgeable musical application.

Avoiding a Bland Performance

"The music is either leading to something, away from something, or it is the something."



The Art of Harmony: Building Depth and Mood

THE ROLE OF HARMONY: THE FOUNDATION

Provides a Supportive Structure

Acts as the cordial framework that supports and elevates the main musical or visual focus.

Creates Balance and Unity

Ensures that all elements are complemented and balanced, with a clear understanding of their roles.

Develops Variety and Depth

Creates opportunities to introduce new layers and orchestration, preventing creative stagnation.

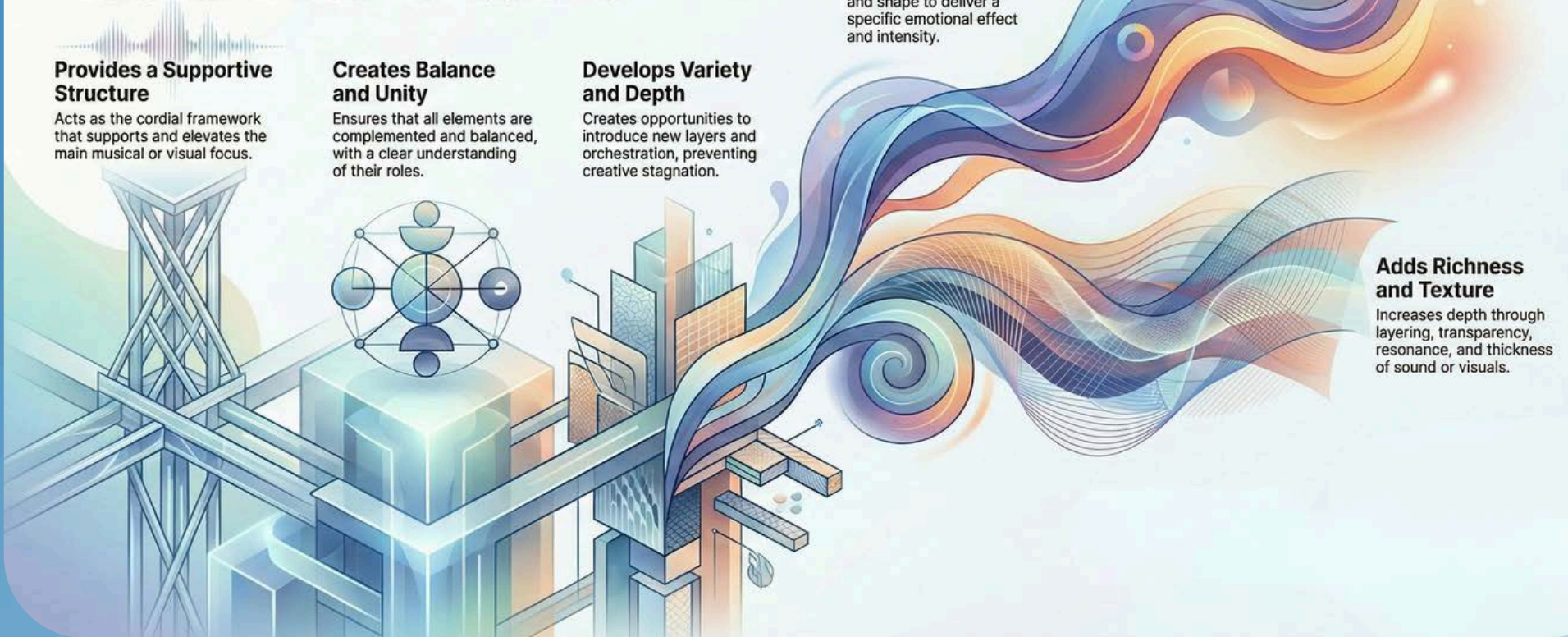
THE IMPACT OF HARMONY: THE EFFECT

Influences Mood and Emotion

Uses color, density, range, and shape to deliver a specific emotional effect and intensity.

Adds Richness and Texture

Increases depth through layering, transparency, resonance, and thickness of sound or visuals.



Making Words Work:

A Creator's Guide to Text in Performance

Core considerations for using text and voiceovers to enhance performance, emphasizing clear conceptual purpose and artistic precision.



Text Must Support the Core Idea

Ask if words are truly necessary and successfully enhance the main concept.



Drive the Narrative Forward

Ensure text adds clarity and meaning to the storyline and overall structure.



Motivate & Enhance Meaning

Use words to clarify performance design, inspire movement, or deepen emotional impact.



Conceptual Purpose:
Why Use Text?

Effective Execution:
How to Use Text?



Prioritize Absolute Clarity



The diction must be clearly audible and intelligible over any accompanying music.



Treat Voice Like a Melody

The listener will naturally hear spoken words as a musical line; treat them accordingly.



Ensure Voiceovers are Captivating



Evaluate the audio fidelity and engagement quality to ensure it moves the concept forward.

The Sound of Color: A Guide to Timbral Variety

A rich palette of different sounds and textures.

It's the unique character that distinguishes different instruments, voices, and sound sources.

It's built from diverse sonic elements. This includes unique instrument combinations, varied voicings, and surprising sound effects.

Like mixing colors to create a new soundscape.

Sound designers intentionally combine different timbres to produce unique auditory experiences.

Adds "Color" and Shading

A diverse timbre enriches the overall character and mood of the ensemble.

Creates Musical Balance

A thoughtful mix of sounds results in a more engaging and balanced composition.

Introduces Interest and Surprise

Using unexpected sounds and effects captures attention and enhances the listener's experience.



The Spectrum of Sound: A Guide to Tone Color

The Building Blocks of Tone Color

Sonority: The Essence of Sound

Refers to the fundamental warmth and characteristic quality produced in a performance.

The Language of Tone

A Spectrum of Qualities

Tone is described with evocative words like bright, warm, open, muted, and resonant.

Orchestration & Instrumentation

The specific combination of instruments is a primary factor in creating tonal character.

Timbre & Shading

Describes the unique texture of a sound, often in relation to a visual quality.



Creates Variety and Depth

Diverse tonal orchestrations, from acoustic to electronic, add richness to music.

“No ‘Right’ Sound for All Music”

The ideal tone color is always stylistically appropriate for the specific musical piece.

The Blueprint of Performance: Understanding Form

STRUCTURAL COMPONENTS (THE "WHAT")



Texture & Density

The relationship between thick/thin or sparse/crowded elements at any given moment.

Dense/
Crowded



Sparse/
Thin



Cohesive Construction

All individual parts must fit together to create a larger, expressive picture.



Performer Intent

Performers must understand their role in building and communicating the overall structure.

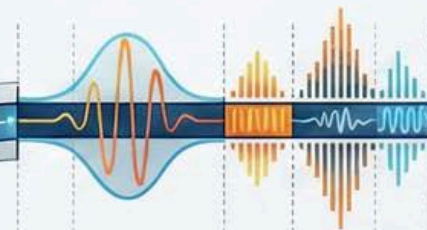


DYNAMIC FLOW (THE "HOW")



Pacing & Interest

The layout and organization of segments creates the composition's timing and flow.



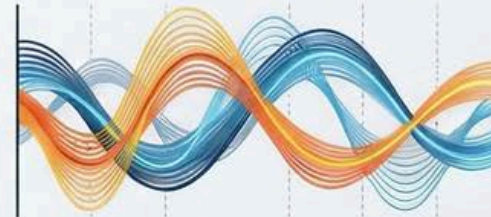
Variety & Connectivity

Varying the elements over time maintains interest and ensures a connected experience.



Audio-Visual Relationship

Ensure a logical and appropriate connection between what is seen and what is heard.



The Art of Pacing: A Guide to Audience Engagement

What is Pacing? The Core Elements



A Journey Through Time

Pacing structures events into a linear journey that unfolds over time.

Orchestrated Peaks & Valleys

It involves creating intentional highs and lows to manage energy and impact.

Variety is Essential

It ensures the program has constant variety, preventing it from feeling monotonous.

Why Does Pacing Matter? The Impact

Maintains Constant Engagement

Effective pacing is what keeps an audience interested from start to finish.

Creates a Sense of Flow

It ensures the performance is always moving forward and holding interest.

Establishes an Appropriate Speed

It determines the right speed for events to be presented to the audience.



The Anatomy of Physical Demand

CORE COMPONENTS

Simultaneous Responsibilities



Layering musical, mental, and motion challenges at the same time.

Athleticism Under Control:
The demand on the body and breath while maintaining high-quality execution.



Environmental Challenges:
Navigating spatial and environmental factors as part of the performance.



EVALUATION CRITERIA

Appropriate Challenge Level



The demand must be challenging but within the performers' skill set.



Difficulty & Value: A visibly impressive and challenging performance holds more value.



Consistency is Key: True difficulty is measured by how hard it is to recreate consistently.

The Arranger's Guide to Instrumentation

KEY ELEMENTS OF INSTRUMENTATION

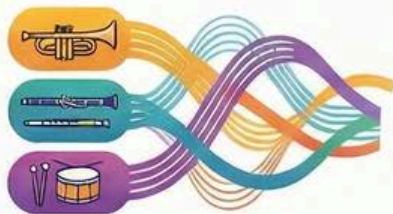
Diverse Voicing

Introduce a variety of musical voices and instruments to create a fresh sound.



Clear Orchestration

Define which instrument groups play together and their specific roles within the music.



Utilize All Sections

Creatively use brass, woodwinds, percussion, front ensemble, and even electronics.



STRATEGIC IMPACT OF INSTRUMENTATION

Achieve Sonic Balance

Purposefully balance and blend the sound of your chosen group of performers.



Craft Effective Moments

Use your instrumentation strengths to build powerful and memorable musical highlights.



Enhance or Limit Potential



Mapping Performance:

A Guide to Geographical Demand

Performer & Staging Challenges

Create a Hierarchy of Responsibility

Use varied field placements to challenge performers' listening and performance skills differently.

Stage for Maximum Impact

Deliberately place the most demanding moments where they can be showcased effectively.

Manipulate Distance and Range

Utilize spacing and distance to test performer control and expand their range.

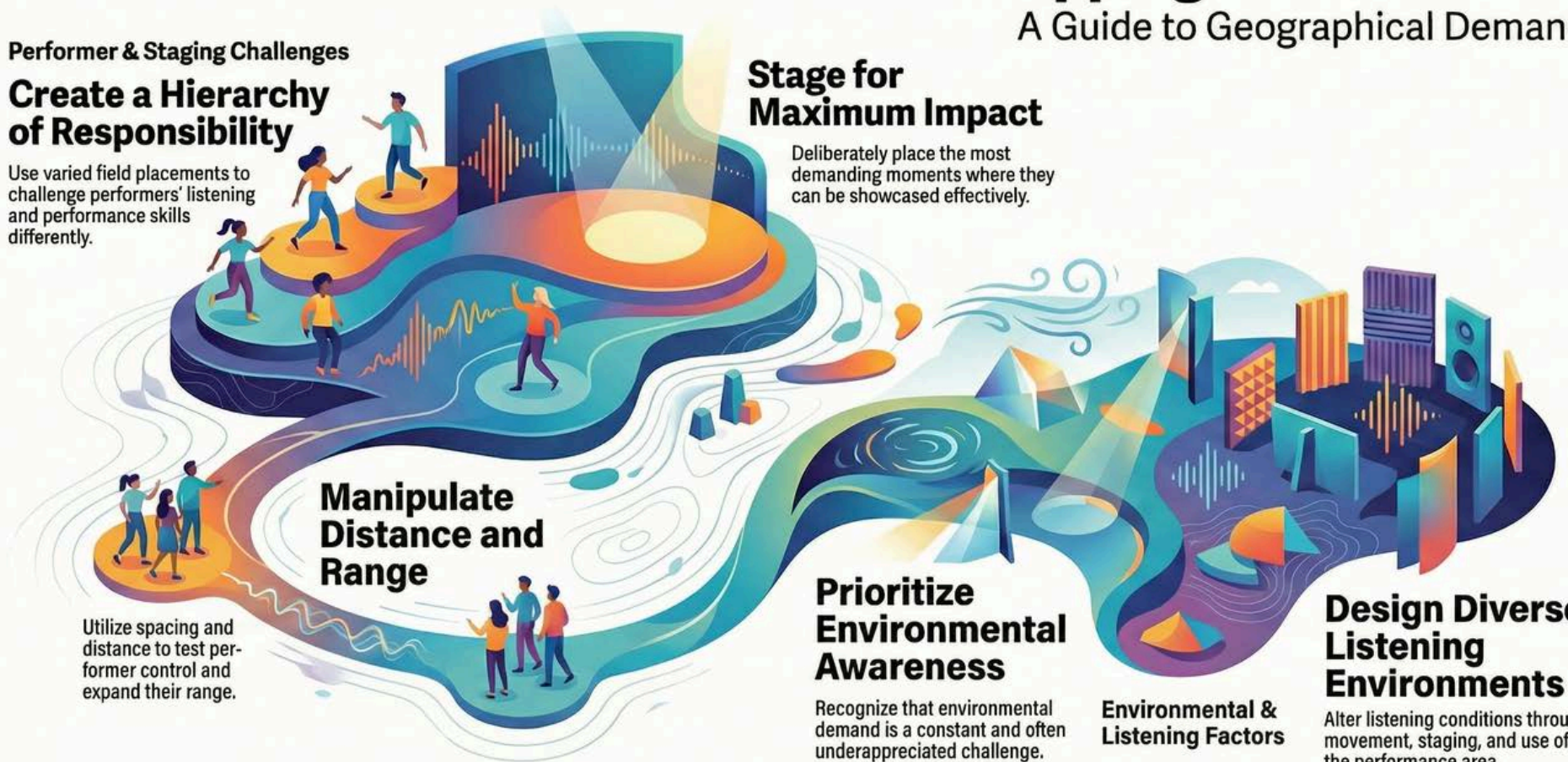
Prioritize Environmental Awareness

Recognize that environmental demand is a constant and often underappreciated challenge.

Environmental & Listening Factors

Design Diverse Listening Environments

Alter listening conditions through movement, staging, and use of the performance area.



THE ART OF INTELLECTUAL DEPTH

WHAT IS INTELLECTUAL DEPTH?



It's About Layered Meaning

Depth is created by thoughtfully combining harmony, musical selection, and overall concept.



It's Driven by a Mindful Thought Process

The uniqueness and meaning behind the creation increases the overall effect.



Its Presence is Clearly Appreciated

When intellectual depth is omnipresent, it is obvious and highly valued.



HOW TO RECOGNIZE IT

Do the Performers Show Depth and Range?

Assess if the performers embody the deeper conceptual layers of the piece.



Does It Make the Audience Think?

A key sign is when the work asks the audience to consider multiple ideas.



Does It Create a Sense of Intrigue?

Does the performance make you wonder, "How did they do that?"

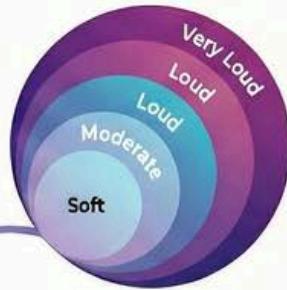


The Art of Expressive Performance

THE CORE COMPONENTS

VARIETY IS ESSENTIAL

Performers should express a full range of different moods and emotions.



MASTERFUL DYNAMICS

Utilize at least four ranges of dynamics to build emotion and mood.



PERFORMER UNDERSTANDING

Great expression showcases creativity, tone control, and musical sensibility.

COMMUNICATING EMOTION

Technical Skill

Emotional Connection

THE MEASURE OF MUSICIANSHIP

The ability to shape and communicate emotion proves a performer's skill.

CREATING THE MOOD

A passionate performance uses expression to establish a powerful atmosphere.

VISUAL & PHYSICAL DYNAMICS

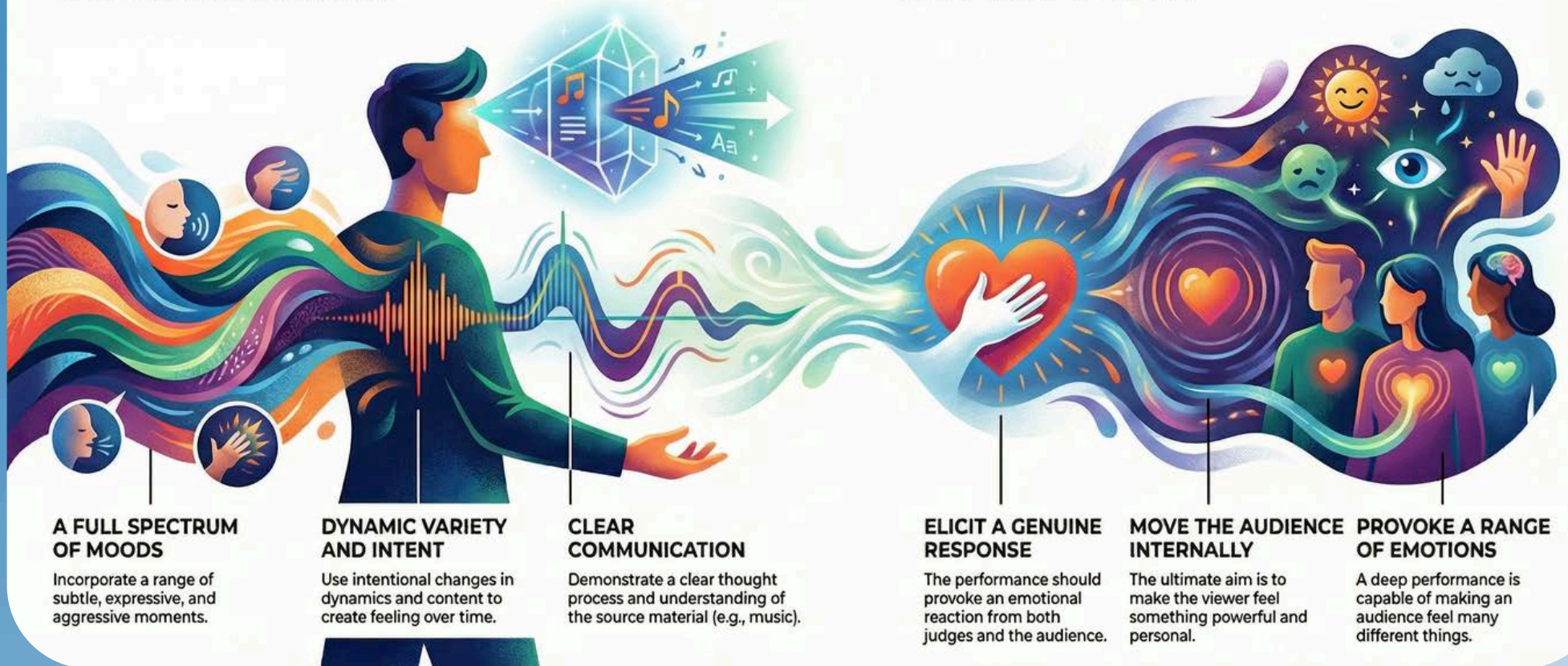
Body movement serves as a visual prop to enhance emotional communication.



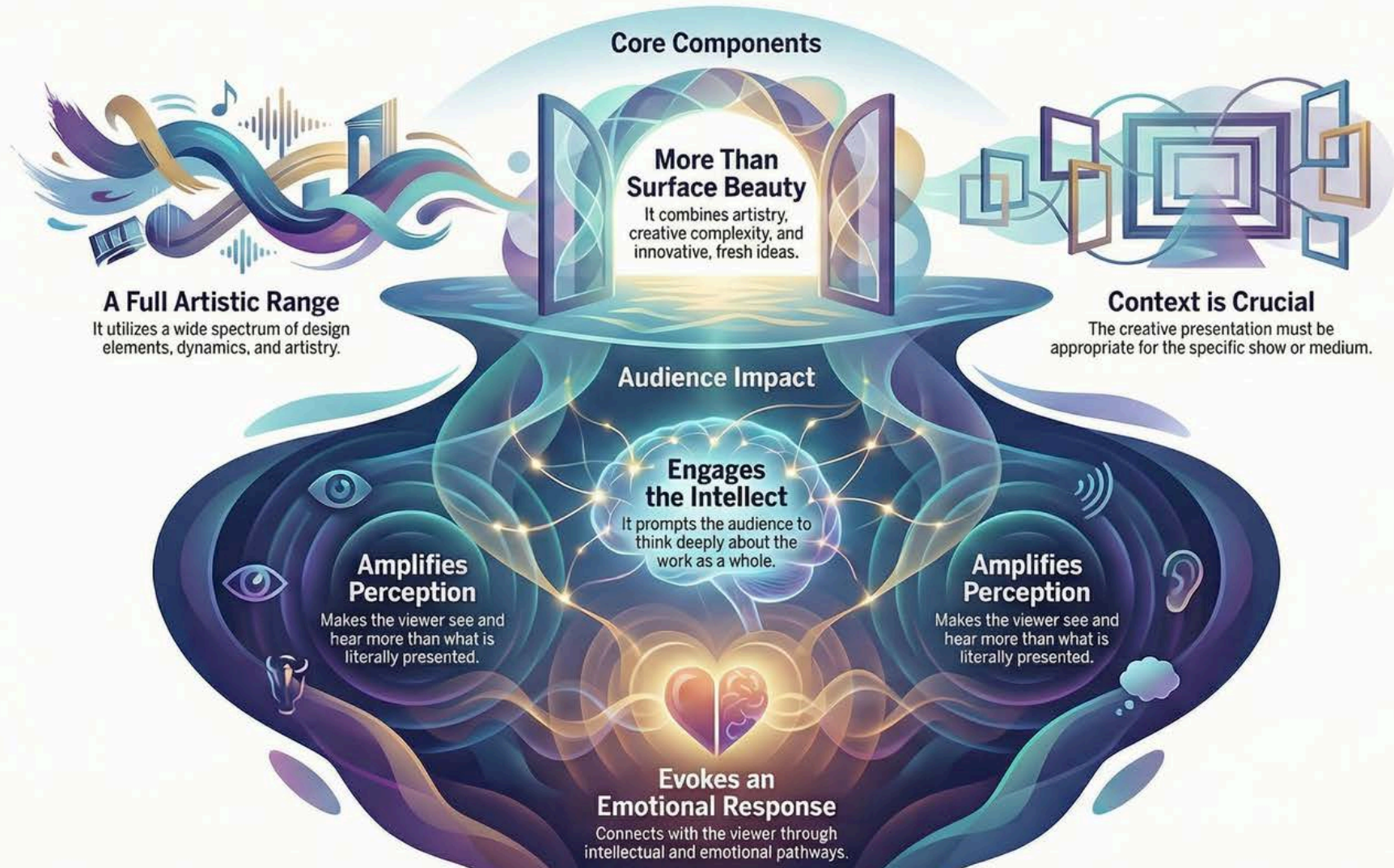
Creating Emotional Depth: A Performer's Guide

THE BUILDING BLOCKS

THE DESIRED IMPACT



The Elements of Aesthetic Depth





WGI WINDS - JUDGE TRAINING

January 16-17, 2025

S a t u r d a y A f t e r n o o n

W e l c o m e B a c k ! !

HIGHLIGHTING The WINDS MANUAL

GUIDE TO JUDGING: A CLASS to OPEN to WORLD

Our goal is to assist in the their training and development
and to reward their achievement in a logical learning
progression.

TEACHER - **COUNSELOR** - **CRITIC**



HIGHLIGHTING The WINDS MANUAL

FIVE STEPS OF LEARNING: (David Kolb's Learning Theory)
Essentially - learning represented through cyclical process

Three paradigms: (Basic, Intermediate, Advanced)

EXPERIENCE

DISCOVER

KNOW

UNDERSTAND

APPLY

Kolb believed that learning is a continuous process where individuals cycle through these stages, and each stage is influenced by both personal experiences and the context of the learning environment.





THE TEACHER

PRIMARY FOCUS:

- Mechanics & Fundamentals
- Rhythmic Accuracy & Intonation
- Basic Technique
- "How" to fix errors

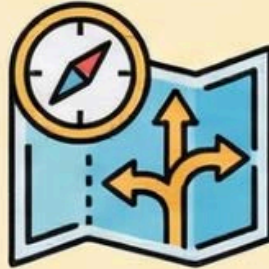
"Fix vertical alignment..."

"Listen back to percussion..."

COMMENTARY TONE:

- Prescriptive & Direct
- Cause & Effect
- Basic Terminology
- Encouraging Growth

"Lower the third..."



THE COUNSELOR

PRIMARY FOCUS:

- Editing & Pacing
- Form & Staging
- Ensemble Cohesion
- "Where" to refine choices

"Consider thinning texture..."

"Edit the transition..."

COMMENTARY TONE:

- Guidance & Suggestion
- Exploring Options
- Question-Based
- Refining the Vehicle

"Pacing feels slow here..."



THE CRITIC / CURATOR

PRIMARY FOCUS:

- Artistry & Intent
- Emotional Arc
- Aesthetic Choices
- "Why" it works (or doesn't)

"Seamless integration..."

"Powerful orchestration choice..."

COMMENTARY TONE:

- Evaluative & Analytical
- Analyzing Design
- High-Level Vocabulary
- Valuing Unique Voices

"Intent is clear..."



THE TEACHER

PRIMARY FOCUS:

- Mechanics & Fundamentals
- Rhythmic Accuracy & Intonation
- Basic Technique
- "How" to fix errors

"Fix vertical alignment..."

"Listen back to percussion..."

COMMENTARY TONE:

- Prescriptive & Direct
- Cause & Effect
- Basic Terminology
- Encouraging Growth

"Lower the third..."



THE COUNSELOR

PRIMARY FOCUS:

- Editing & Pacing
- Form & Staging
- Ensemble Cohesion
- "Where" to refine choices

"Consider thinning texture..."

"Edit the transition..."

COMMENTARY TONE:

- Guidance & Suggestion
- Exploring Options
- Question-Based
- Refining the Vehicle

"Pacing feels slow here..."



THE CRITIC / CURATOR

PRIMARY FOCUS:

- Artistry & Intent
- Emotional Arc
- Aesthetic Choices
- "Why" it works (or doesn't)

"Seamless integration..."

"Powerful orchestration choice..."

COMMENTARY TONE:

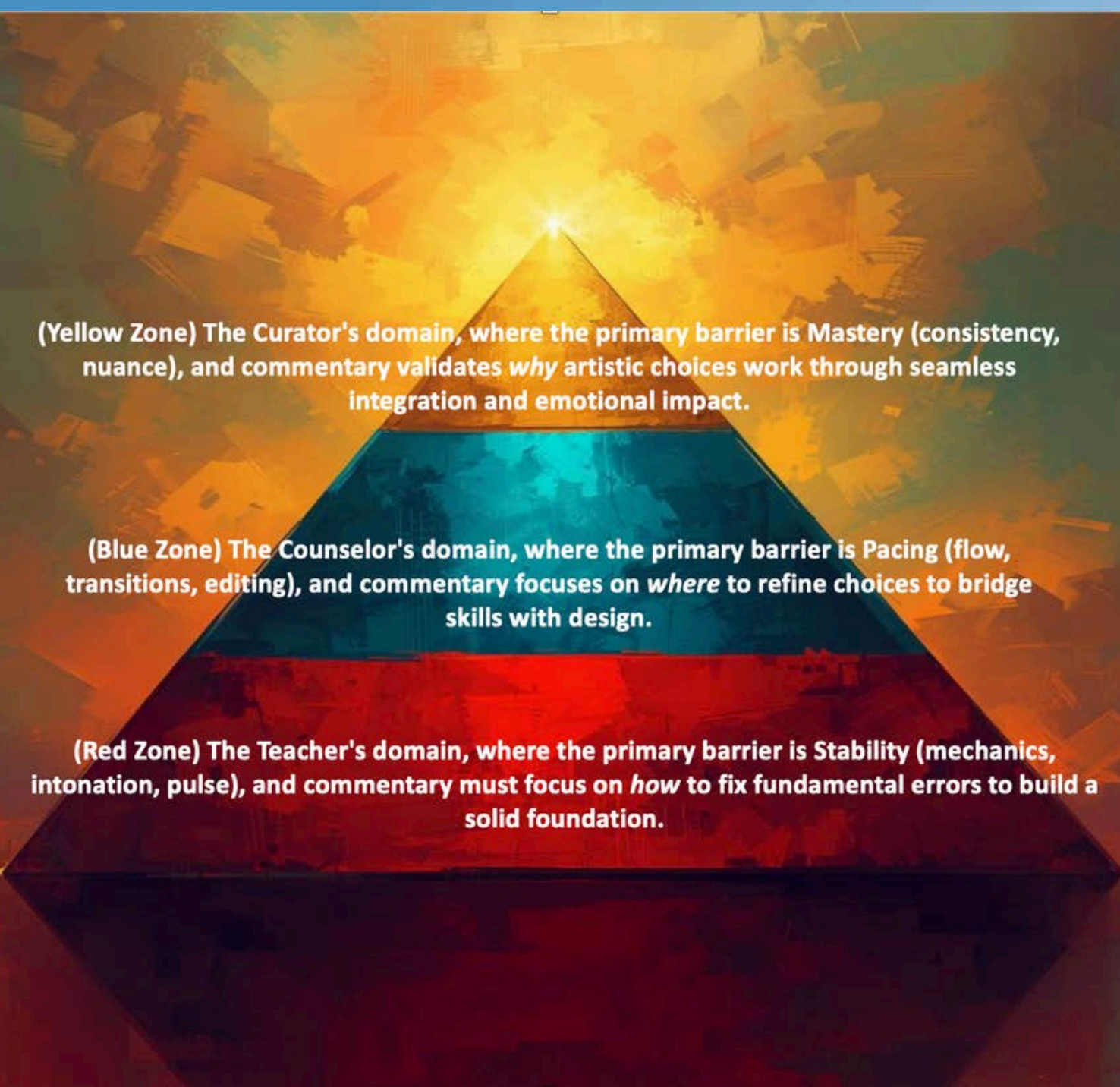
- Evaluative & Analytical
- Analyzing Design
- High-Level Vocabulary
- Valuing Unique Voices

"Intent is clear..."

Skill Development

Design Refinement

Artistic Mastery



(Yellow Zone) The Curator's domain, where the primary barrier is Mastery (consistency, nuance), and commentary validates *why* artistic choices work through seamless integration and emotional impact.

(Blue Zone) The Counselor's domain, where the primary barrier is Pacing (flow, transitions, editing), and commentary focuses on *where* to refine choices to bridge skills with design.

(Red Zone) The Teacher's domain, where the primary barrier is Stability (mechanics, intonation, pulse), and commentary must focus on *how* to fix fundamental errors to build a solid foundation.

A CLASS (The Teacher)	WORLD CLASS TGA Mosh
Focus: Pulse, Interval, Clarity, Definition.	Focus: Aesthetic, Seamlessness, Style, Idiom.
Sentence Starters:	Sentence Starters:
<i>"We are losing the vertical alignment to the pulse here..."</i>	<i>"There is a seamless integration between the body and the phrase..."</i>
<i>"The feet are reacting to the conductor rather than the battery..."</i>	<i>"The visual musicality here perfectly reflects the orchestration..."</i>
<i>"Watch your spacing during the transition..."</i>	<i>"The staging evolves naturally, creating a sense of..."</i>
<i>"Define the style of movement before the drill begins..."</i>	<i>"The stylistic nuance matches the environmental demand..."</i>
<i>"The visual velocity is fighting the musical tempo."</i>	<i>"There is an effortless quality to the high-velocity movement."</i>
A CLASS (The Teacher)	WORLD CLASS TGA Mosh
Focus: Intonation, Balance, Rhythmic Accuracy.	Focus: Texture, Sonority, Orchestration, Shape.
Sentence Starters:	Sentence Starters:
<i>"The third of the chord is sitting high; lower it to lock the sonority..."</i>	<i>"The sonority is mature and resonant..."</i>
<i>"Listen back to the battery for the tempo center..."</i>	<i>"The rhythmic interplay between sections is handled with ease..."</i>
<i>"The balance is top-heavy; we need more root sound..."</i>	<i>"The texture is transparent, allowing the solo voice to shine..."</i>
<i>"Make sure the release is together..."</i>	<i>"The taper of the phrase is managed beautifully..."</i>
<i>"Avoid forcing the sound in the louder dynamics."</i>	<i>"The ensemble maintains relaxed confidence at fff."</i>
A CLASS (The Teacher)	WORLD CLASS Mosh Mosh
Focus: Pacing, Staging, Audience Engagement.	Focus: Emotional Arc, Identity, Intellectual Depth.
Sentence Starters:	Sentence Starters:
<i>"The pacing drags here; we need a change in energy..."</i>	<i>"The emotional arc is sustained through the transition..."</i>
<i>"Help the audience know where to look..."</i>	<i>"The intent of this moment is communicated clearly..."</i>
<i>"The character drops when you stop playing..."</i>	<i>"The commitment to identity is total and convincing..."</i>
<i>"Connect the visual book to the soundtrack..."</i>	<i>"The aesthetic choices elevate the musical program..."</i>
<i>"This transition feels like 'downtime'..."</i>	<i>"The thoughtful construction of the bridge keeps us engaged..."</i>

SCORING CONSIDERATIONS

IMPRESSION - The Judge's subjective reaction

ANALYSIS - The objective aspect of judging that attempts to standardize the process.

COMPARISON - Requires the judge to look at the number give and compare to other scores given not only in this contest but earlier contests - Indicating where the groups stand on a national level



The Value of a Tenth: Decoding Judge Spreads

CORE PRINCIPLES OF THE TOOL



Protection Against Arbitrary Spreads

Provides judges a means of examining the significance of gaps between units.



Bottom-Line Application

The tool applies only to the overall total score, not individual sub-captions.



Not a Mandate for Ties

While a useful guide, judges must still rank and rate units independently.

SCORING SPREAD INTERPRETATIONS



Essentially Equal

Differences are minor, rankings could reverse night-to-night based on performance.



Clear Preference

One unit is identifiably better due to narrow differences and varied nuances.

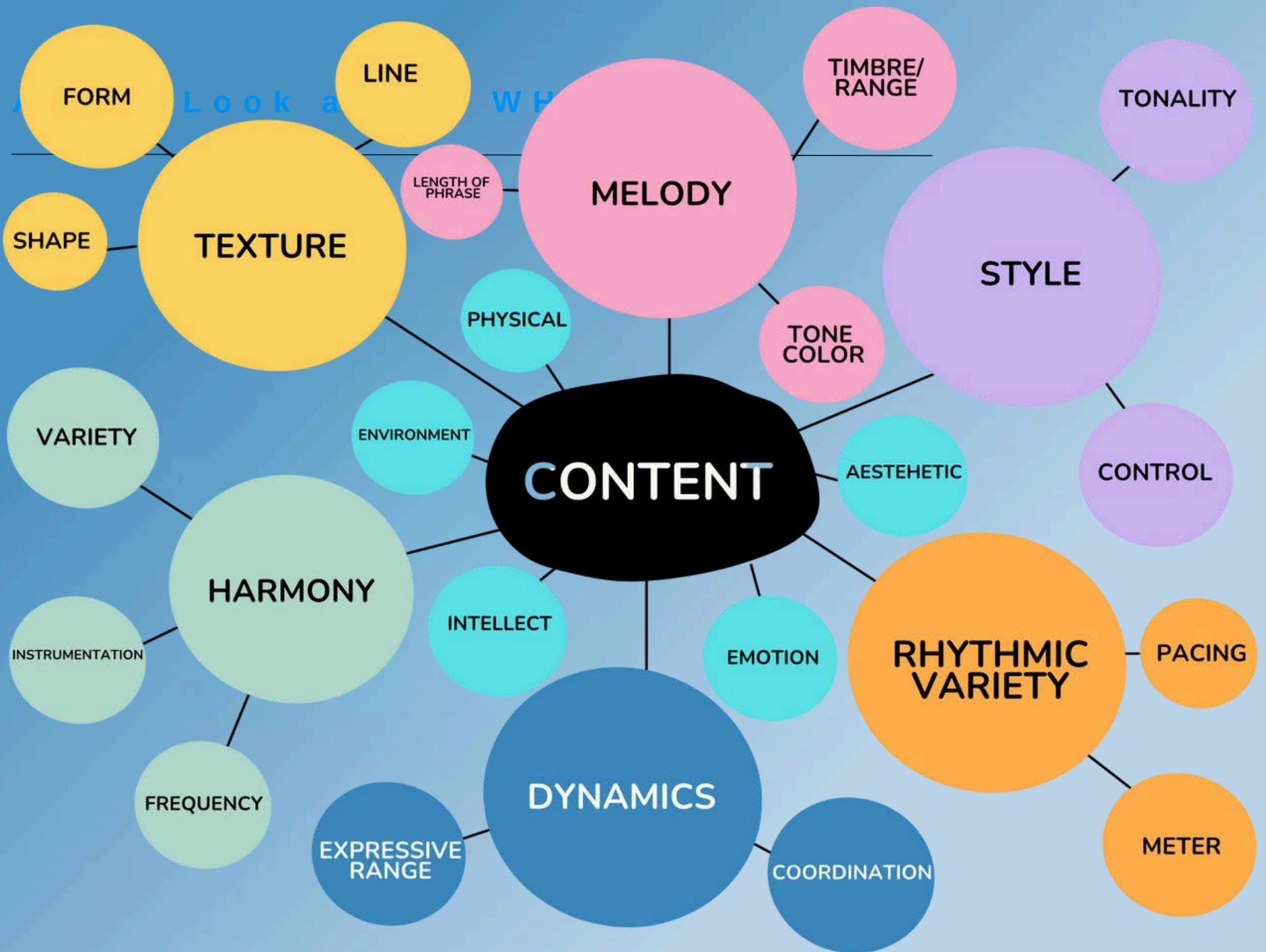


Significant Gaps

Evident variations in performance achievement, completion, or quality exist between units.

Quick-Reference Guide: Translating Point Gaps into Descriptive Differences

POINT SPREAD	MEANING	DESCRIPTIVE DETAIL
0.1 – 0.35	Minor Issues	Units are essentially equal; minor issues or different sub-caption strengths.
0.4 – 0.65	Narrow Differences	Clear that one unit is better; judge must identify specific narrow differences.
0.7 – 0.95	Significant Differences	1–2 major differences in completion, quality, or performance achievement.
1.0+	Multiple Significant Differences	Multiple major factors separate the units.



C o n s e n s u s D e f i n i t i o n

K e y T h e m e s

J u d g e E x p e c t a t i o n s

D e s i g n P r i n c i p l e s

T e c h n i c a l / P e r f o r m a t i v e
R e q u i r e m e n t s

E m o t i o n a l a n d A e s t h e t i c I m p a c t

Menti.com Code: 7686 9557





Edinburgh



Warren Central



Hernando



Valley Christian

Questionnaire





THANK YOU - SHORT BREAK

January 16-17, 2025



Obsidian Winds



Damien

