

# 2019 Springfield Regional Contest Information

**Saturday, March 9**  
**Prelims Begin 10 am**  
**Finals Begin 6:30 am**

**Facility:** Willard High School  
515 East Jackson Street  
Willard, MO 65781

## Emergency Contacts (day of show only)

Tom Hachmeister—708-220-5192  
Duane Williams—314-288-7714

## Ticket Prices/Info

Prelims—\$15  
Finals—\$15  
Combo—\$23

Cash or check  
Please make checks payable to MCCGA

Please contact the show sponsor ticket contact PRIOR to the show if you have any questions or have a special circumstance.

## Regional Contact Info

Contest Administrator—Tom Hachmeister  
708-220-5192  
tomh@wgi.org

General & Practice Info—Duane Williams  
314-288-7714  
[mccgapresident@yahoo.com](mailto:mccgapresident@yahoo.com)

## Judging Panels

Panels are available in this packet

## General Contest Info

**TO LISTEN TO JUDGES COMMENTARY:** Each director should be set up with an account through CompetitionSuite. This is the only way to receive judge's commentary for any WGI event. Instructions to do this are available [here](#).

**SOUND CHECK:** One hour prior to the start of the contest and during breaks at the discretion of the Contest Administrator. If you choose to use the new music upload feature available in CompetitionSuite, WGI suggests you still do a sound test. Information regarding music uploads is available in the Regional Reminders.

**WARM-UP AREA:** All maps are located in this packet. There is to be no music in warm up as it is shared space.

**PRELIM SCORES:** Posted in lobby area.

**GROUP SUMMARY SHEETS & RECAPS:** Available on CompetitionSuite.com.

**CRITIQUE:** There will not be a critique available at this event.

**FINALS SCHEDULE:** The finals schedule will be made available on WGI.org after it has been determined. The SA class is in rounds for this event.

All open and world class color guards must make qualifying score to progress to finals. Qualifying scores are located in the regional reminders.

**VIDEOS:** No video cameras will be allowed in any contest venue and no authorized space will be provided for groups to record their performance. Any liability associated with unauthorized recordings will rest with the individual or organization making the recording. WGI does not condone, nor accept any liability for, any unauthorized recording during the event.

**PRACTICE SITES:** Color guards making practice arrangements through the regional committee must settle their unpaid invoices at check in upon arriving on Saturday.

**PLEASE NOTE:** WGI has adopted and will enforce a **NO SMOKING** policy at all WGI Regionals, including practice facilities.

Don't forget to review the [Regional Reminders!](#)



## Winter Guard International

2405 Crosspointe Drive, Dayton, OH 45342 Phone: 937-247-5919 Fax: 937-247-9212 Email: [office@wgi.org](mailto:office@wgi.org) <http://www.wgi.org>



## Accessing Judge Commentary

**You must have already activated your Competition Suite Account Profile in order for you to be able to listen to WGI judge commentary.**

### **From a Smart phone:**

Download the Commentary app:

- Apple: <https://itunes.apple.com/us/app/competitionsuite-commentary/id594112091?ls=1&mt=8>
- Android: <https://play.google.com/store/apps/details?id=com.competitionsuite.commentary>

### **From the website:**

1. Visit <http://competitionsuite.com/login/> and log in using the password you set up in your CompetitionSuite profile.
2. Click on "Performances" on the left side of the page under your group's name.
3. Click on the appropriate commentary file you'd like to download or listen to.

### **Support**

If you have questions, feel free to contact support at [help@competitionsuite.com](mailto:help@competitionsuite.com).



## 2019 WGI Springfield Color Guard Regional Judge Panels

### Prelims

	Equipment	Movement	Design Analysis	General Effect	
<b>SRA</b>	Sam Gervaise	Adam Sage	Dan Niebauer	Christine Clayton	Grady Robertson
<b>SA</b>	Adam Sage	Christine Clayton	Jim Sturgeon	Paul Lampkin	Grady Robertson
<b>IA</b>	Sam Gervaise	Christine Clayton	Dan Niebauer	Paul Lampkin	Grady Robertson
<b>SO</b>	Sam Gervaise	Christine Clayton	Jim Sturgeon	Dan Niebauer	Grady Robertson
<b>IO</b>	Sam Gervaise	Christine Clayton	Jim Sturgeon	Paul Lampkin	Grady Robertson
<b>IW</b>	Sam Gervaise	Christine Clayton	Jim Sturgeon	Paul Lampkin	Grady Robertson

### Finals

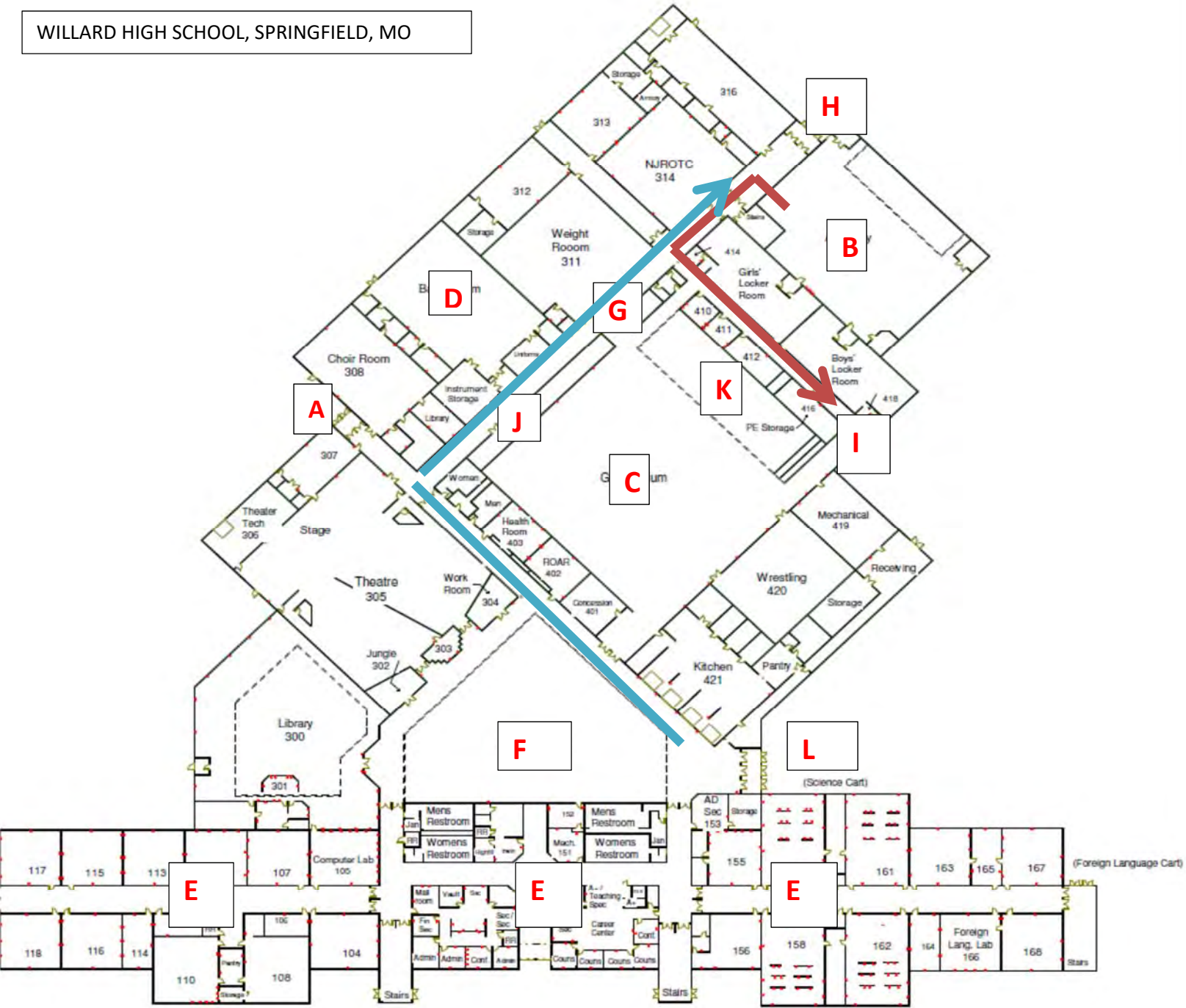
	Equipment	Movement	Design Analysis	General Effect	
<b>SRA</b>	Sam Gervaise	Christine Clayton	Jim Sturgeon	Paul Lampkin	Grady Robertson
<b>SA</b>	Sam Gervaise	Christine Clayton	Dan Niebauer	Grady Robertson	Adam Sage
<b>IA</b>	Sam Gervaise	Adam Sage	Jim Sturgeon	Paul Lampkin	Dan Niebauer
<b>SO</b>	Sam Gervaise	Adam Sage	Jim Sturgeon	Paul Lampkin	Dan Niebauer
<b>IO</b>	Sam Gervaise	Adam Sage	Jim Sturgeon	Paul Lampkin	Dan Niebauer
<b>IW</b>	Sam Gervaise	Adam Sage	Jim Sturgeon	Paul Lampkin	Dan Niebauer

<b>T&amp;P</b>	Jean Padawan
----------------	--------------

<b>Lead Judge</b>	Paul Lampkin
-------------------	--------------



# WGI-Springfield Color Guard Regional Willard High School



- A-UNIT CHECK IN**
- B-WARM UP GYM**
- C-PERFORMANCE GYM**
- D-TARP FOLDING**
- E-UNIT STORAGE**
- F-CONCESSIONS/VENDORS**
- G-PROP STORAGE (WIDE HALLWAYS)**
- H-PROP UNLOAD**
- I-PERFORMANCE ENTRANCE (VERTICAL TIMELINE)**
- J-PERFORMANCE EXIT**
- K-SPECTATOR/JUDGE SEATING**
- L-SPECTATOR ENTRANCE (ADMISSION)**

**TO WARM-UP** 

**WARM UP TO PERFORMANCE** 

# WGI Springfield Color Guard Regional Willard High School



Guard Exit

75'

105'

Interval Time Line

Guard Entrance

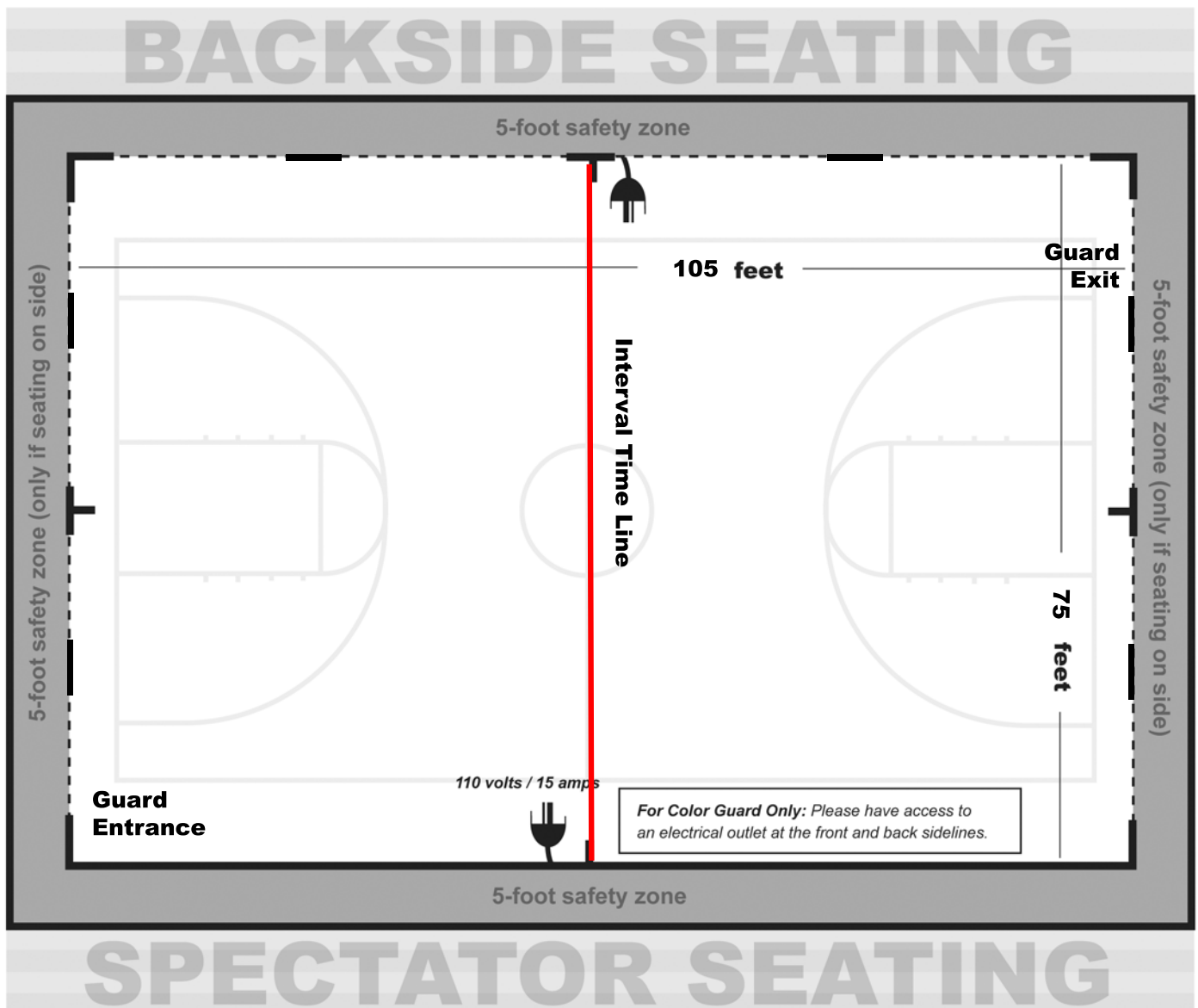




## Springfield Regional Competition Area Willard High School, Springfield, MO

All WGI contest sites must have a minimum of seventy by one hundred feet (70' x 100') to accommodate a "safety zone" of five (5) feet from any spectator seating. If no spectators are seated on the left and right sides, then the safety zone will be eliminated on the left and right sides of the competition area and can extend to the maximum of 106'X 78'.

The "competition area" at this event measures 105'X 75'. All performing groups must be prepared to perform within that area. Floors (tarps) may not extend into the safety zones per rules found in the WGI Adjudication Manual and Rulebook.



## ***From the 2019 WGI Policy Manual***

### **4.120 Sound Policy (Color Guard)**

- All color guards should do a sound check at the designated times provided in the contest information packet to ensure the playability of any device or CD. Color guards should check the soundtrack at multiple places in the music to verify playability of any device
- Color guards should still do a sound check if they are using the WGI Music Upload in CompetitionSuite to ensure everything is correct.
- Color guard is responsible for providing the method that the music will be played, e.g. CD, MP3, computer, etc. Each color guard should have two methods to play their soundtrack in the event one does not work.
- Color guard must provide their music in a timely manner to the designated sound operator. Any delay in providing music is the responsibility of the color guard.
- Color guards using the Music Upload process through CompetitionSuite should have a backup using another device type such as an MP3 player, iPhone, or CD.
- Color guard must have a designated person at the sound table to operate any device provided to play music such as MP3 players or computers. Guard's representative is responsible to set up and play device. If a CD is provided, the color guard representative must instruct the sound operator as to what track or other relevant information is needed to start the music when directed by the contest Timing and Penalty judge or after the color guard's introduction.
- If the color guard has an issue with the music such as music is too soft, it begins in the wrong place or skips, the color guard's representative must make the decision to stop the music and tell the operator to stop the music. If the color guard representative chooses not to stop and the color guard completes their performance, the color guard will not be offered an opportunity to perform again.
- Interval timing will continue as the color guard resets and begins again. The Contest Administrator has the sole discretion in waiving any timing penalty due to the restart. If the stoppage is due to faulty sound equipment, operator error or an unexplained reason, overtime penalty may be waived.
- Issues related to the equipment provided by the color guard, quality of the CD or the color guard's representative error (using wrong playlist on MP3, etc.) will result in the actual interval timing being used and penalties, if any, being assessed.
- Volume direction must come from the color guard representative at the sound table. Direction will not be taken from the audience viewing area or across the floor. Final volume discretion is given to the sound operator based on their equipment and the Chief Judge who ultimately determines an appropriate volume level.
- The color guard representative may provide direction to the sound operator during the performance regarding equalization.
- It is the responsibility of the color guard to provide their music for each performance and to ensure that their soundtrack is working appropriately. CDs may not be left at sound table between performances.
- Under no circumstances will verbal abuse of the sound operator be tolerated. Penalties will be assessed per current WGI rules