

ATLANTA PERCUSSION & WINDS REGIONAL CONTEST INFORMATION

SATURDAY, MARCH 14, 2020



LOCATION

LAMBERT HIGH SCHOOL
805 NICHOLS RD.
SUWANEE GA 30024

EMERGENCY CONTACTS *(DAY OF SHOW ONLY)*

CONTEST ADMINISTRATOR: Kenneth Coultas – 931-231-0486 – kenneth@wgi.org
EVENT PARTNER: Tonya Mashburn - 404-683-0056 - tonyamashburn@gmail.com

JUDGE PANEL

Effect Music – Julie Davila
Effect Visual & Winds Visual Analysis – Mickey Kelly
Music – Rick Rodriguez
Visual & Winds Music Analysis – Jay McArthur
T&P – Benja Russell

COMPETITIONSUITE DETAILS

ACCESSING YOUR GROUP - <https://help.competitionsuite.com/article/16-accessing-your-group>

ADDING YOUR STAFF - <https://help.competitionsuite.com/article/61-adding-staff-members>

ACCESSING COMMENTARY - <https://help.competitionsuite.com/article/17-accessing-commentary>

Score Summary Sheets are also located in your CompetitionSuite account with your overall score.

ADDITIONAL REGIONAL INFO

WINDS PRELIMS LOGISTICAL SCHEDULE - [HTTPS://BIT.LY/2T2P8HT](https://bit.ly/2T2P8HT)

PERCUSSION PRELIMS LOGISTICAL SCHEDULE - [HTTPS://BIT.LY/32EXIKI](https://bit.ly/32EXIKI)

WINDS FINALS LOGISTICAL SCHEDULE – [HTTPS://BIT.LY/2VbWGZY](https://bit.ly/2VbWGZY)

PERCUSSION FINALS LOGISTICAL SCHEDULE – [HTTPS://BIT.LY/37LYeCH](https://bit.ly/37LYeCH)

REGIONAL REMINDERS - [HTTPS://WGI.ORG/WP-CONTENT/UPLOADS/2020/02/PERC.WINDSREGIONALREMINDERS.PDF](https://wgi.org/wp-content/uploads/2020/02/PERC.WINDSREGIONALREMINDERS.PDF)

WGI Atlanta Regional Lambert HS



Nichols Rd.

Spectator
Entrance

Spectator
Parking

Group
Parking

Spectator
Parking

Performance
Gym

Group
Chek In

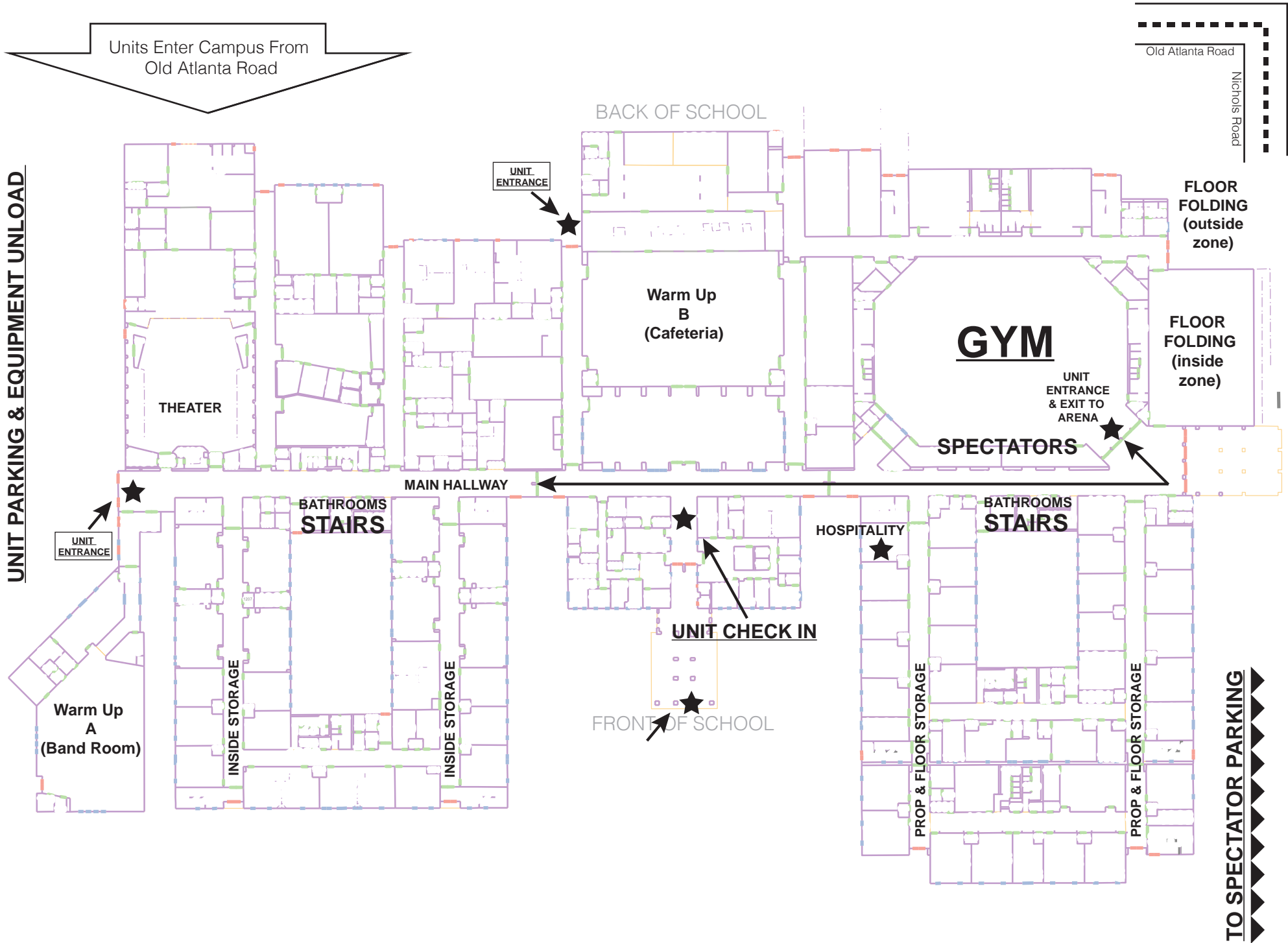
Group
Parking

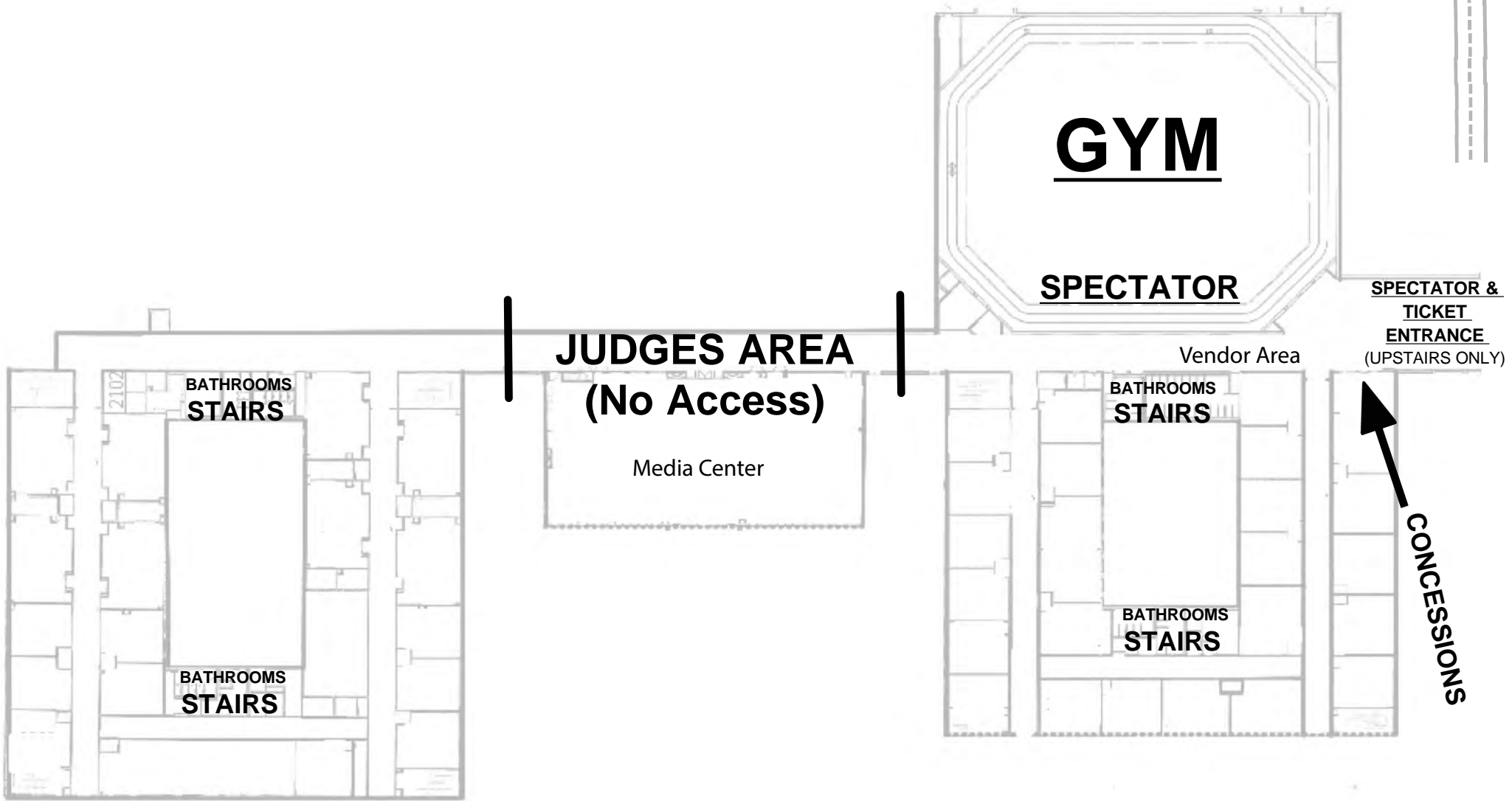
Bus/Truck
Unloading

Sharon Rd./Old Atlanta Rd.

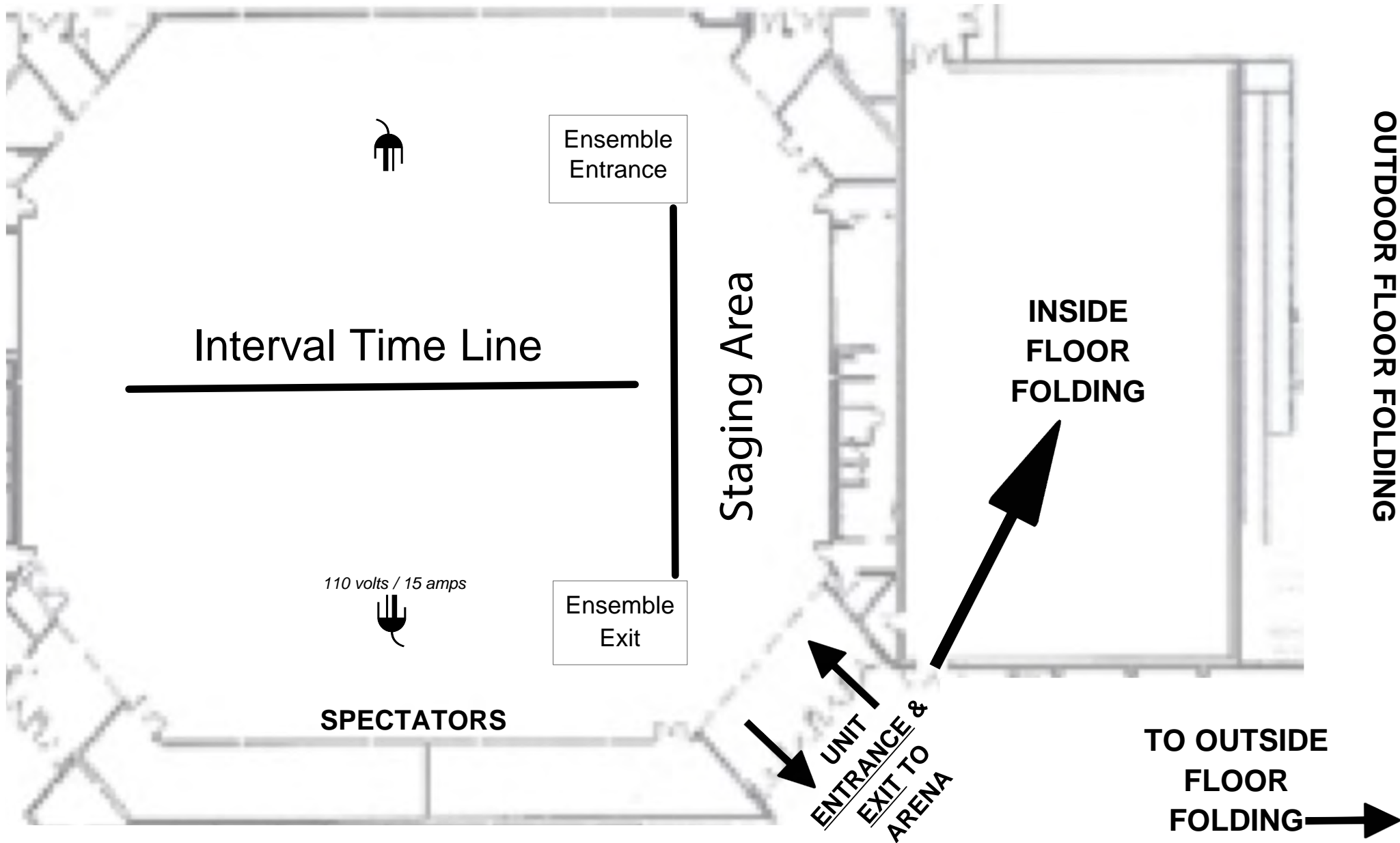
Group Entrance

James Burgess Rd.





UPPER LEVEL VIEW



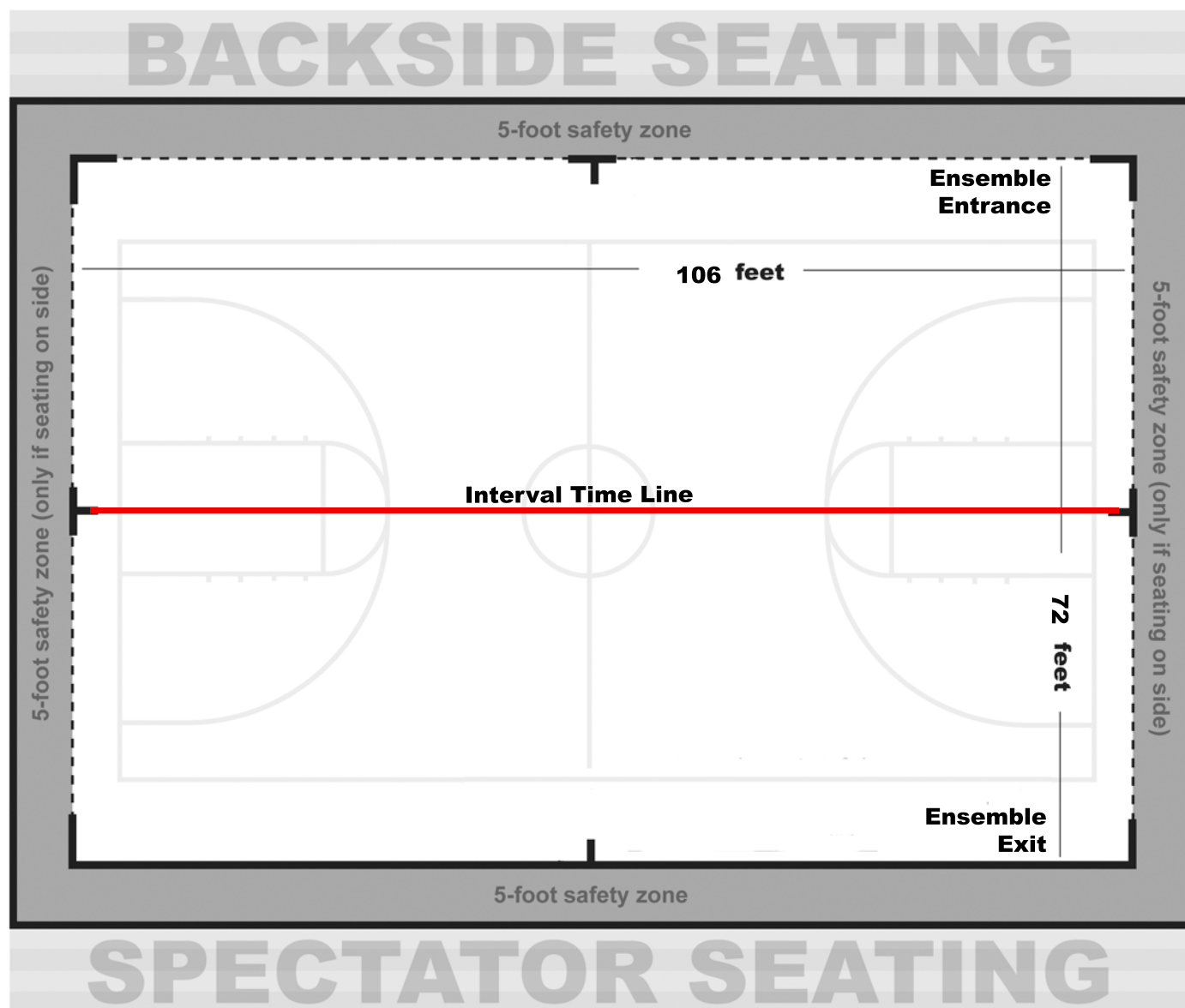
GYM VIEW



Atlanta Regional Competition Area Lambert High School, Suwanee, GA

All WGI contest sites must have a minimum of seventy by one hundred feet (70' x 100') to accommodate a "safety zone" of five (5) feet from any spectator seating. If no spectators are seated on the left and right sides, then the safety zone will be eliminated on the left and right sides of the competition area and extend to the wall.

The "competition area" at this event measures 72'X106'. All performing groups must be prepared to perform within that area. Floors (tarps) may not extend into the safety zones per rules found in the WGI Adjudication Manual and Rulebook





2020 WGI REGIONAL PATCH DELAYED

Order yours today to receive
them as soon as they arrive.



\$8 Plus Tax • **FREE DOMESTIC SHIPPING** ON ORDERS OF 10 OR MORE!

SHOP.WGI.ORG

POWERED BY *PepWear*