



Springfield Color Guard Regional

Site:

Willard High School
515 East Jackson Street
Willard, MO 65781

Dimensions: 105' x 75'

Front Side Bleacher Rows: 23 **Seating Capacity:** appx 1100

Approximate Ceiling Height: appx 55 ft

There are no stairs to contend with in the competition area.

There is a scoreboard well above the competition floor.

Color guards do not enter the competition area directly from the outdoors.

There is electrical power available at the front and back sideline.

Color guards do not exit the competition area directly to the outdoors.

The hallways will be utilized for prop storage prior to the competition.

The performance floor is a wooden gym floor with a one piece, black vinyl tarp measuring appx 90' X 60'.

The band room will be utilized for indoor floor refolding in the event of inclement weather.

The distance from the warm up gym to the performance gym is approximately 1 minute.

There are not separate areas for body and equipment.

Warm Up Area A

Split Gym

Dimensions: 50ft. X 35ft.

Approximate Ceiling Height: appx 40 ft.

There are raised basketball goals above the warm up area.

Music may not be used in warm up as it will disturb the other color guard in the area.

Warm Up Area B

Split Gym

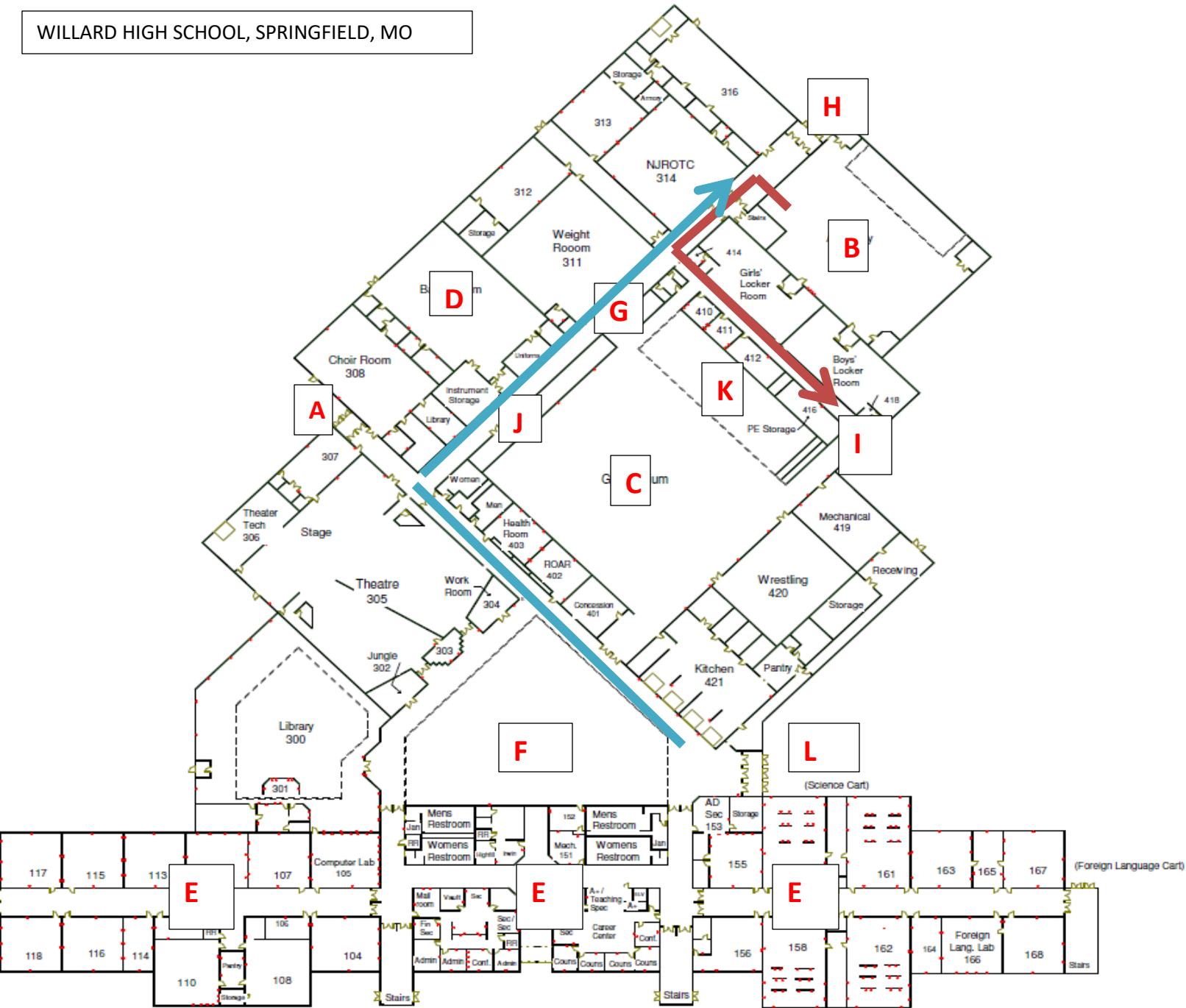
Dimensions: 50ft. X 35ft.

Approximate Ceiling Height: appx 40 ft.

There are raised basketball goals above the warm up area.

Music may not be used in warm up as it will disturb the other color guard in the area.

The above information is being provided to you in order give you the most complete information we currently have on this contest. All information is subject to change either before or during the event by contest personnel based on need.



- A-UNIT CHECK IN**
- B-WARM UP GYM**
- C-PERFORMANCE GYM**
- D-TARP FOLDING**
- E-UNIT STORAGE**
- F-CONCESSIONS/VENDORS**
- G-PROP STORAGE (WIDE HALLWAYS)**
- H-PROP UNLOAD**
- I-PERFORMANCE ENTRANCE (VERTICAL TIMELINE)**
- J-PERFORMANCE EXIT**
- K-SPECTATOR/JUDGE SEATING**
- L-SPECTATOR ENTRANCE (ADMISSION)**





Entrance H: Prop Entrance Outside Door-- 6' 8" Tall; 5' 9" Wide



Entrance H: Prop Entrance Inside Door--7' Tall; 5' 10" Wide



Entrance H: Prop Security Boxes on Outside Door. Measurements are figured with this included.



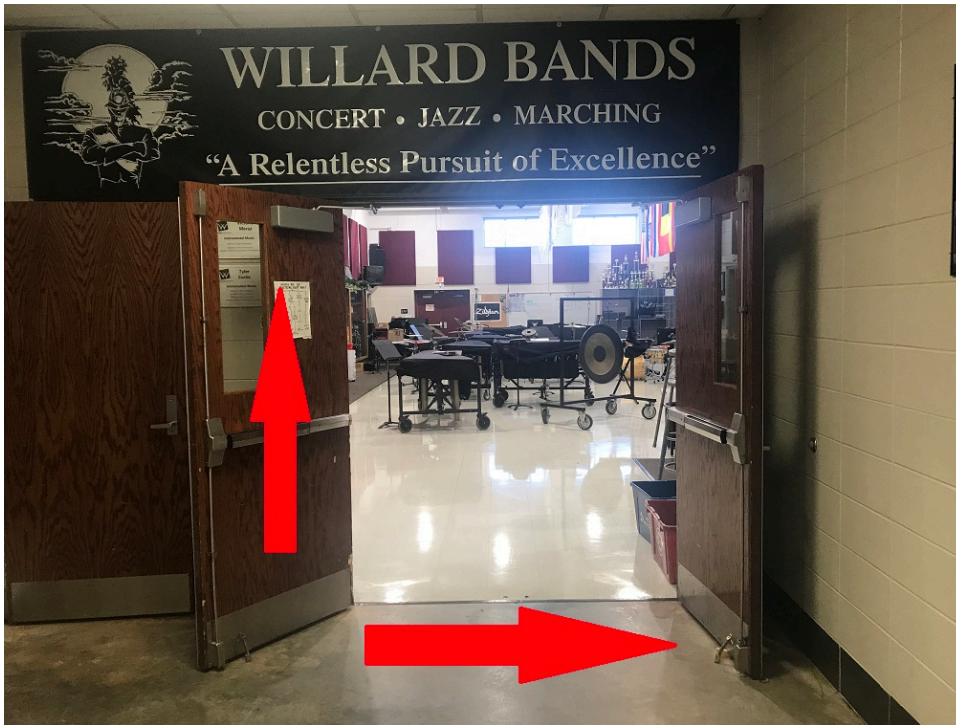
Entrance I: Performance Staging Hallway—7' Tall; 5' 11" Wide.



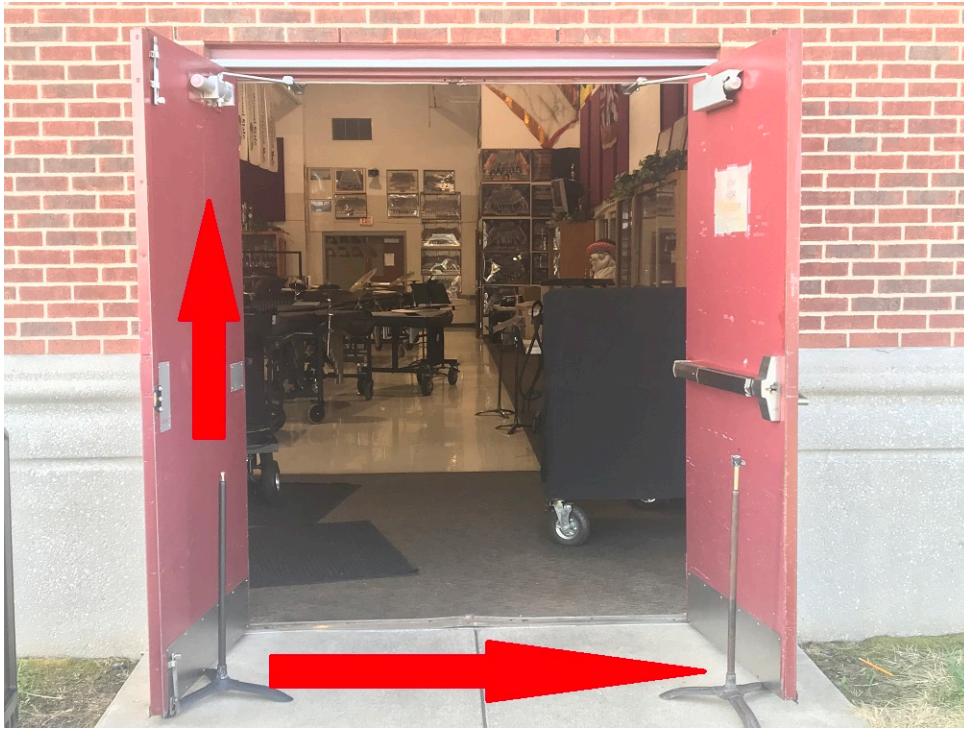
Entrance I: Performance Entrance to Main Gym—7' Tall; 5' 9" Wide.



Exit J: Performance Exit to Tarp Folding Area—7' Tall; 5' 9" Wide.



Exit J: Tarp Folding Area—7' Tall; 5' 6" Wide.



Exit D: Tarp and Prop Exit Outside—6' 6" Tall; 5' 10" Wide.