

# OMAHA COLOR GUARD REGIONAL CONTEST INFORMATION SATURDAY, FEBRUARY 22, 2020



---

## LOCATION

Bellevue East High School  
1401 High School Drive  
Bellevue, NE 68005

---

## EMERGENCY CONTACTS (DAY OF SHOW ONLY)

CONTEST ADMINISTRATOR: AJ Kise / 484-934-4578 / [aj@wgi.org](mailto:aj@wgi.org)  
EVENT PARTNER: Charles Wright / 402-297-7766 / [charles.wright@bpsne.net](mailto:charles.wright@bpsne.net)

---

## JUDGE PANEL

EQ Doug Henderson  
MV Becca Anderson (LJ)  
DA Robby Overvliet  
GE Christine Dillon & Andy Combites  
T&P Adam Killham

---

## COMPETITIONSUITE DETAILS

ACCESSING YOUR GROUP - <https://help.competitionsuite.com/article/16-accessing-your-group>

ADDING YOUR STAFF - <https://help.competitionsuite.com/article/61-adding-staff-members>

ACCESSING COMMENTARY - <https://help.competitionsuite.com/article/17-accessing-commentary>

MUSIC UPLOADS - <https://help.competitionsuite.com/article/74-uploading-performance-music>

*Score Summary Sheets are also located in your CompetitionSuite account with your overall score.*

---

## ADDITIONAL REGIONAL INFO

PRELIMS LOGISTICAL SCHEDULE - <https://tinyurl.com/rvrvazu>

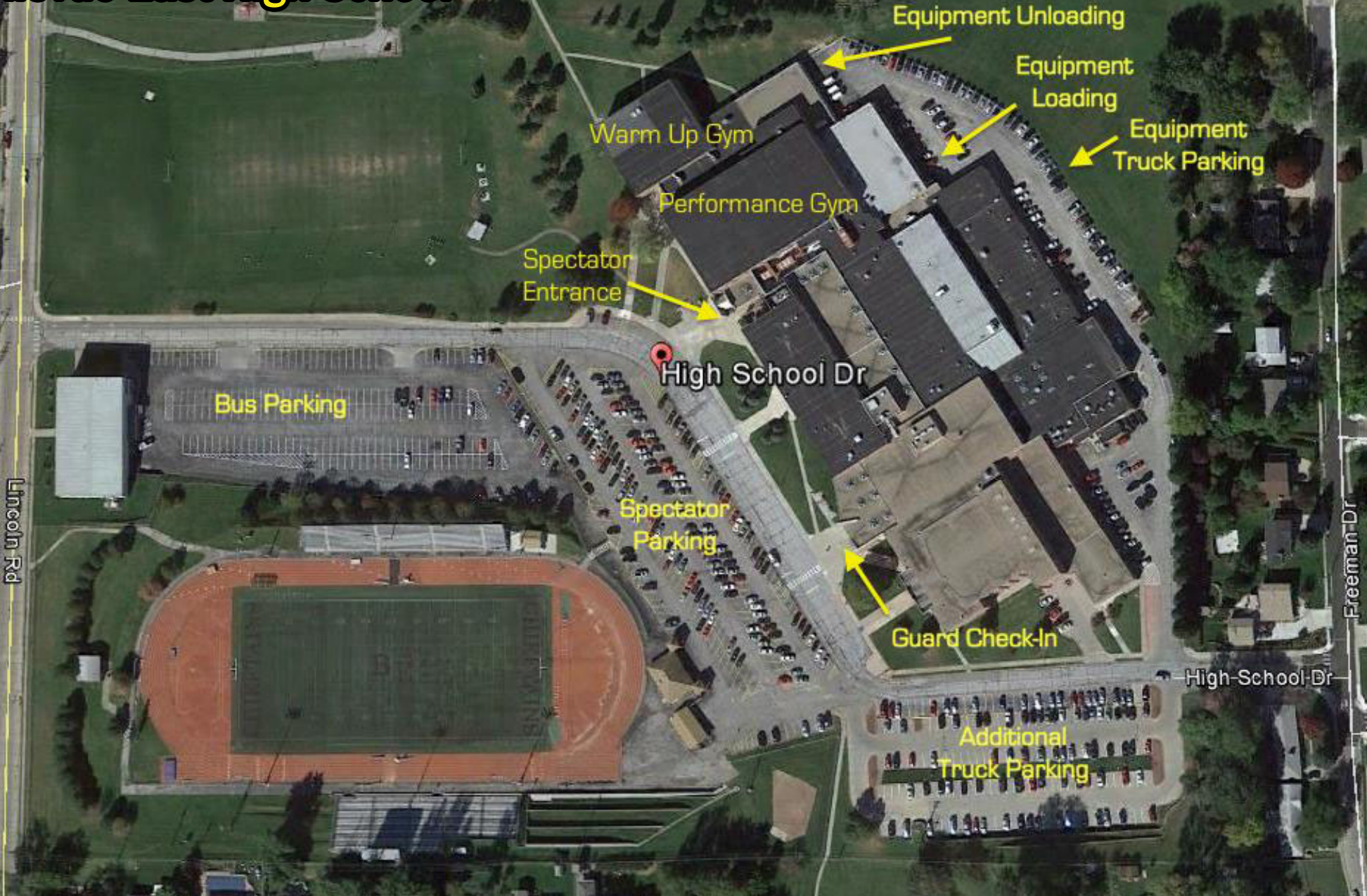
FINALS LOGISTICAL SCHEDULE - <https://tinyurl.com/wk9mnlf>

WARM UP AREAS – Music is not permitted in warm up as it is shared space.

SCORE POSTING – Posted in the concession area.

REGIONAL REMINDERS - <https://wgi.org/wp-content/uploads/2020/01/2020CGRegionalReminders.pdf>

# WGI Omaha Color Guard Regional Bellevue East High School



Equipment Unloading

Equipment Loading

Equipment Truck Parking

Warm Up Gym

Performance Gym

Spectator Entrance

High School Dr

Bus Parking

Spectator Parking

Guard Check-In

Additional Truck Parking

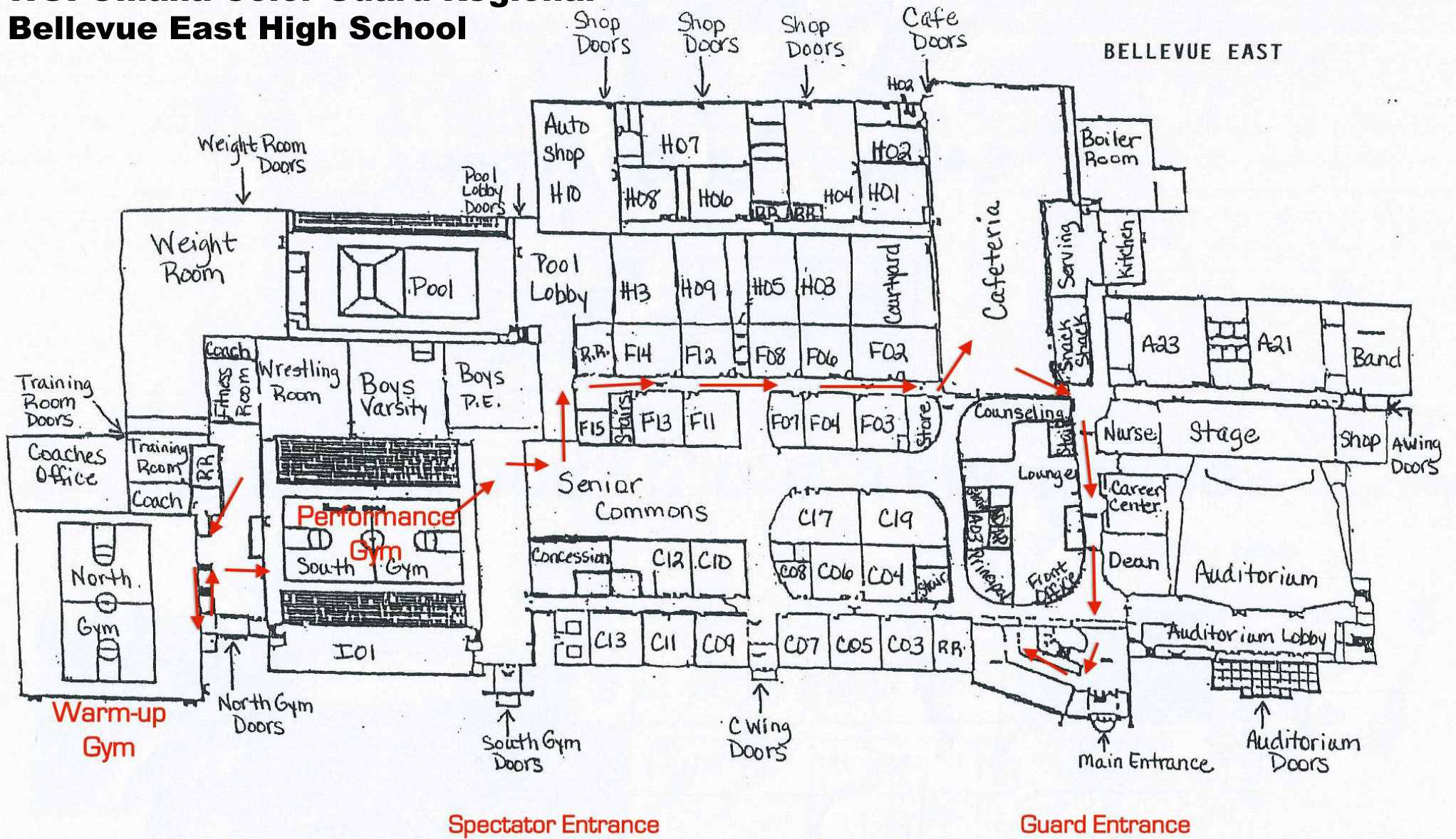
Lincoln Rd

S Harvell Dr

Freeman Dr

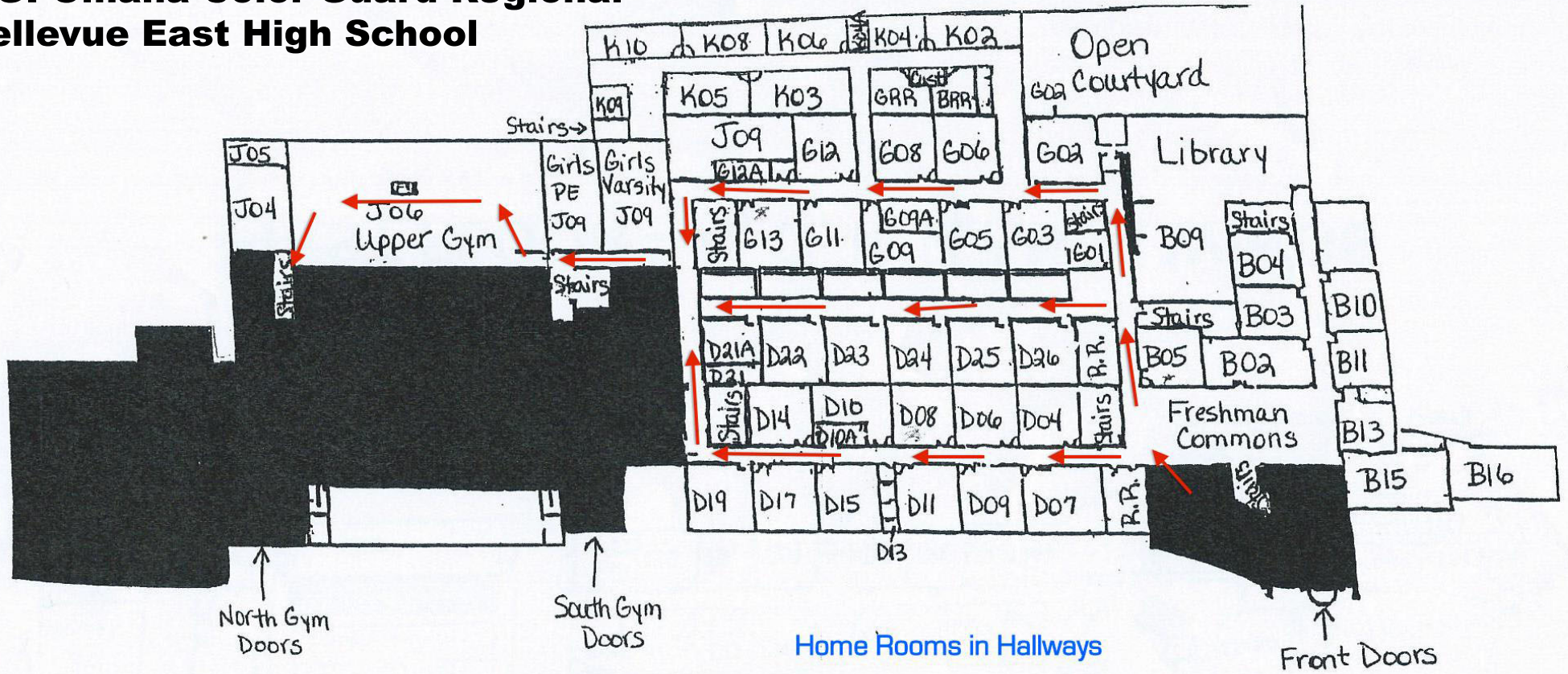
High School Dr

# WGI Omaha Color Guard Regional Bellevue East High School

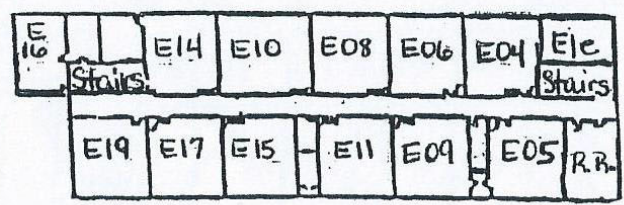


**FIRST FLOOR – A, C, F, H AND I WINGS**

# WGI Omaha Color Guard Regional Bellevue East High School

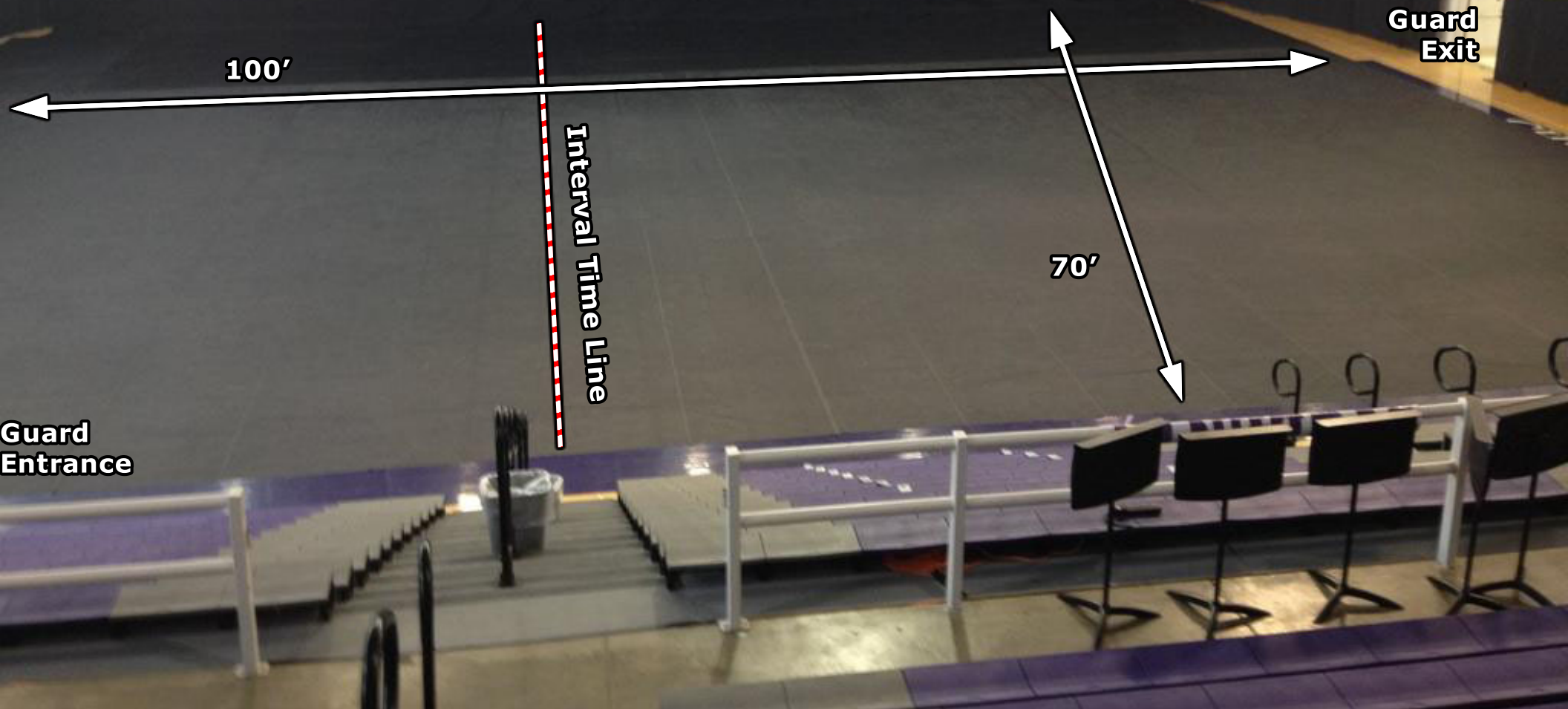


## SECOND FLOOR – B, D, G, J AND K WINGS



## THIRD FLOOR – E WING

# WGI Omaha Color Guard Regional Bellevue East High School Performance Gym

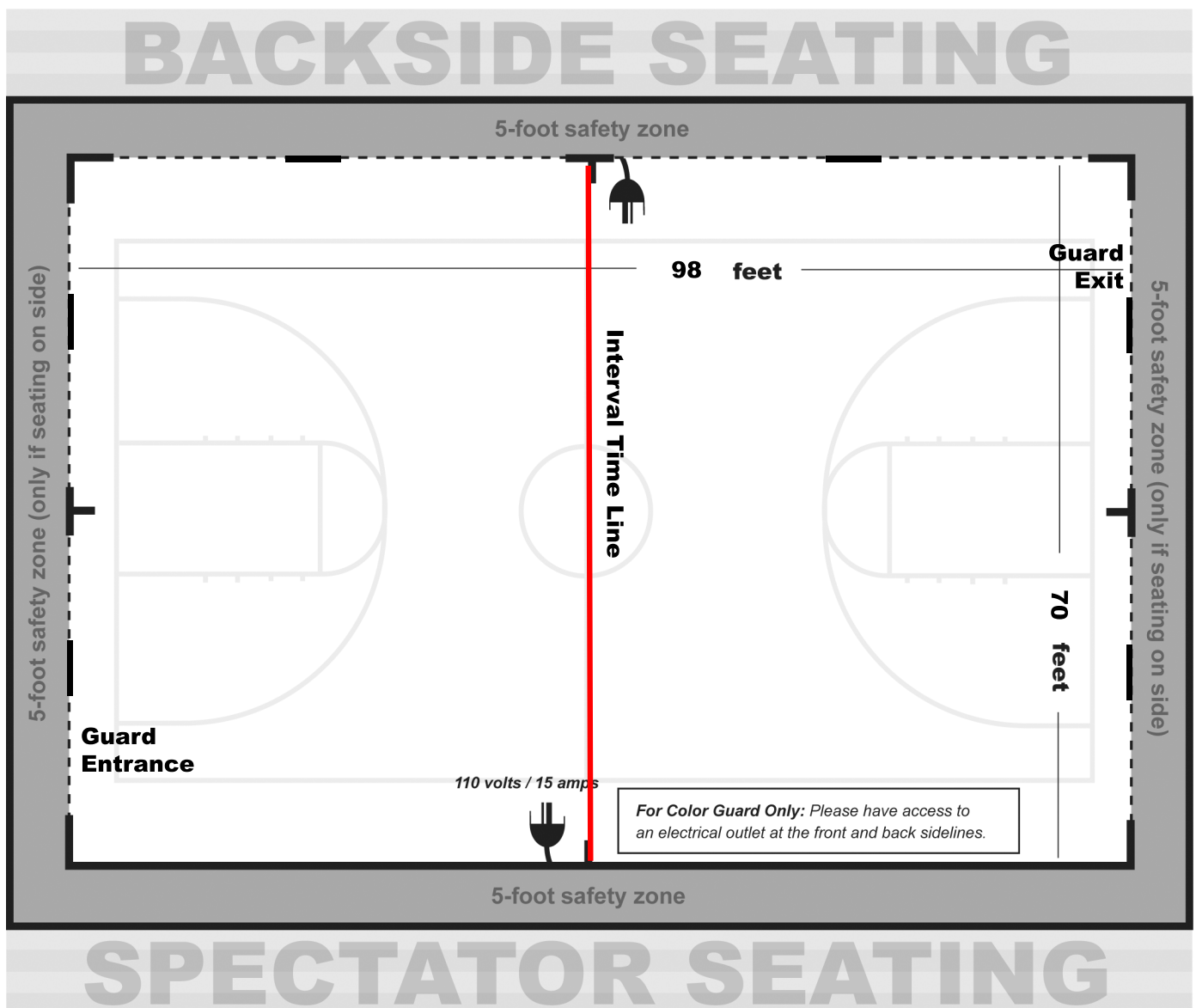




## Omaha Regional Competition Area Bellevue East High School, Bellevue, NE

All WGI contest sites must have a minimum of seventy by one hundred feet (70' x 100') to accommodate a "safety zone" of five (5) feet from any spectator seating. If no spectators are seated on the left and right sides, then the safety zone will be eliminated on the left and right sides of the competition area and can extend to the maximum of 106'X 78'.

The "competition area" at this event measures 98'X 70'. All performing groups must be prepared to perform within that area. Floors (tarps) may not extend into the safety zones per rules found in the WGI Adjudication Manual and Rulebook.



20 WGI  
20 I AM WGI



# JOIN THE OMAHA CG REGIONAL BAND!

## BAND

- Free all-in-one group communication platform.
- Share group announcements via push notification, text message or email.
- Robust group calendar and membership management.
- Customizable to your unique communication needs.
- Available for your mobile device and desktop.

## BAND LINK:

<https://band.us/n/ada42fKcF1U1M>

- 1 Go to the Apple App Store or Google Play Store, search for BAND and download.
- 2 Sign up using your phone number, email, Facebook account or Google account.
- 3 Scan the QR code or use the link below to join the BAND.



#WGI2020

#IAMWGI

## ***From the WGI Policy Manual***

### **4.120 Sound Policy (Color Guard)**

- All color guards should do a sound check at the designated times provided in the contest information packet to ensure the playability of any device or CD. Color guards should check the soundtrack at multiple places in the music to verify playability of any device
- Color guards should still do a sound check if they are using the WGI Music Upload in CompetitionSuite to ensure everything is correct.
- Color guard is responsible for providing the method that the music will be played, e.g. CD, MP3, computer, etc. Each color guard should have two methods to play their soundtrack in the event one does not work.
- Color guard must provide their music in a timely manner to the designated sound operator. Any delay in providing music is the responsibility of the color guard.
- Color guards using the Music Upload process through CompetitionSuite should have a backup using another device type such as an MP3 player, iPhone, or CD.
- Color guard must have a designated person at the sound table to operate any device provided to play music such as MP3 players or computers. Guard's representative is responsible to set up and play device. If a CD is provided, the color guard representative must instruct the sound operator as to what track or other relevant information is needed to start the music when directed by the contest Timing and Penalty judge or after the color guard's introduction.
- If the color guard has an issue with the music such as music is too soft, it begins in the wrong place or skips, the color guard's representative must make the decision to stop the music and tell the operator to stop the music. If the color guard representative chooses not to stop and the color guard completes their performance, the color guard will not be offered an opportunity to perform again.
- Interval timing will continue as the color guard resets and begins again. The Contest Administrator has the sole discretion in waiving any timing penalty due to the restart. If the stoppage is due to faulty sound equipment, operator error or an unexplained reason, overtime penalty may be waived.
- Issues related to the equipment provided by the color guard, quality of the CD or the color guard's representative error (using wrong playlist on MP3, etc.) will result in the actual interval timing being used and penalties, if any, being assessed.
- Volume direction must come from the color guard representative at the sound table. Direction will not be taken from the audience viewing area or across the floor. Final volume discretion is given to the sound operator based on their equipment and the Chief Judge who ultimately determines an appropriate volume level.
- The color guard representative may provide direction to the sound operator during the performance regarding equalization.
- It is the responsibility of the color guard to provide their music for each performance and to ensure that their soundtrack is working appropriately. CDs may not be left at sound table between performances.
- Under no circumstances will verbal abuse of the sound operator be tolerated. Penalties will be assessed per current WGI rules