

# INDIANAPOLIS WINDS REGIONAL CONTEST INFORMATION

SATURDAY, FEBRUARY 22, 2020

---



---

## LOCATION

GREENFIELD CENTRAL HIGH SCHOOL  
810 N. BROADWAY  
GREENFIELD, IN 46140

---

## EMERGENCY CONTACTS *(DAY OF SHOW ONLY)*

CONTEST ADMINISTRATOR: George Lindstrom - [lgindstrom@yahoo.com](mailto:lgindstrom@yahoo.com) – 303-550-4123  
EVENT PARTNER: Chris Wing - [cwing@gcsc.k12.in.us](mailto:cwing@gcsc.k12.in.us) – 317-467-6727

---

## JUDGE PANEL

Overall Effect – Randy Nelson  
Visual Analysis – Michael Tarr  
Music Analysis – Chip Crofts  
T&P – Dan Middlesworth

---

## COMPETITIONSUITE DETAILS

ACCESSING YOUR GROUP - <https://help.competitionsuite.com/article/16-accessing-your-group>

ADDING YOUR STAFF - <https://help.competitionsuite.com/article/61-adding-staff-members>

ACCESSING COMMENTARY - <https://help.competitionsuite.com/article/17-accessing-commentary>

*Score Summary Sheets are also located in your CompetitionSuite account with your overall score.*

---

## ADDITIONAL REGIONAL INFO

PRELIMS LOGISTICAL SCHEDULE - [HTTPS://BIT.LY/2UdBX4P](https://bit.ly/2UdBX4P)

FINALS LOGISTICAL SCHEDULE - [HTTPS://BIT.LY/2S56DSU](https://bit.ly/2S56DSU)

REGIONAL REMINDERS - [HTTPS://WGI.ORG/WP-CONTENT/UPLOADS/2020/01/PERC.WINDSREGIONALREMINDERS.PDF](https://wgi.org/wp-content/uploads/2020/01/PERC.WINDSREGIONALREMINDERS.PDF)

20<sup>WGI</sup>  
20<sup>I AM</sup>



# JOIN THE INDIANAPOLIS - WINDS REGIONAL BAND!



- Free all-in-one group communication platform.
- Share group announcements via push notification, text message or email.
- Robust group calendar and membership management.
- Customizable to your unique communication needs.
- Available for your mobile device and desktop.

**BAND LINK:**

<https://band.us/n/a7a325KcF7b11>

1

Go to the Apple App Store or Google Play Store, search for BAND and download.

2

Sign up using your phone number, email, Facebook account or Google account.

3

Scan the QR code or use the link below to join the BAND.



#WGI2020

#IAMWGI



# **WGI Indianapolis Winds Regional Greenfield Central High School**

**Spectator Parking**

**Spectator Entrance  
Door #33**

Greenfield Central Comm School

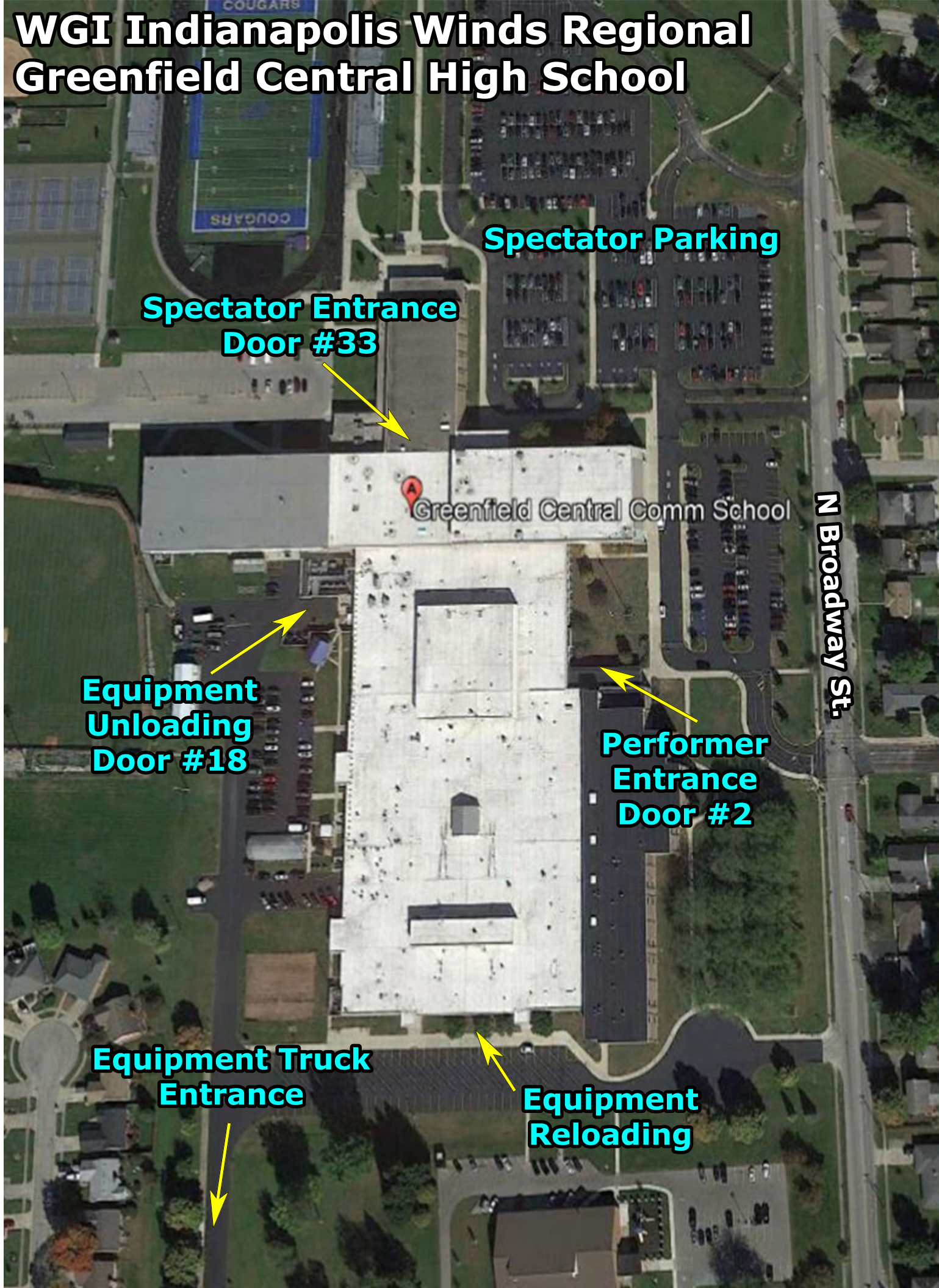
**N Broadway St.**

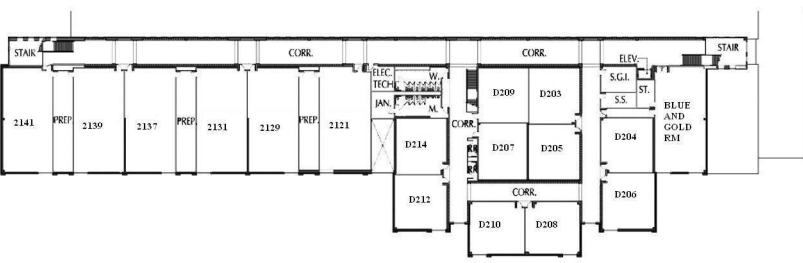
**Equipment  
Unloading  
Door #18**

**Performer  
Entrance  
Door #2**

**Equipment Truck  
Entrance**

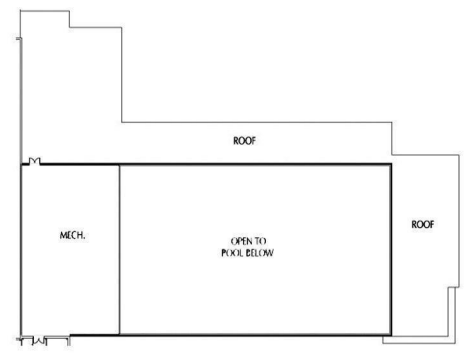
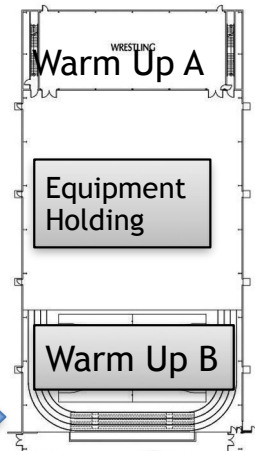
**Equipment  
Reloading**



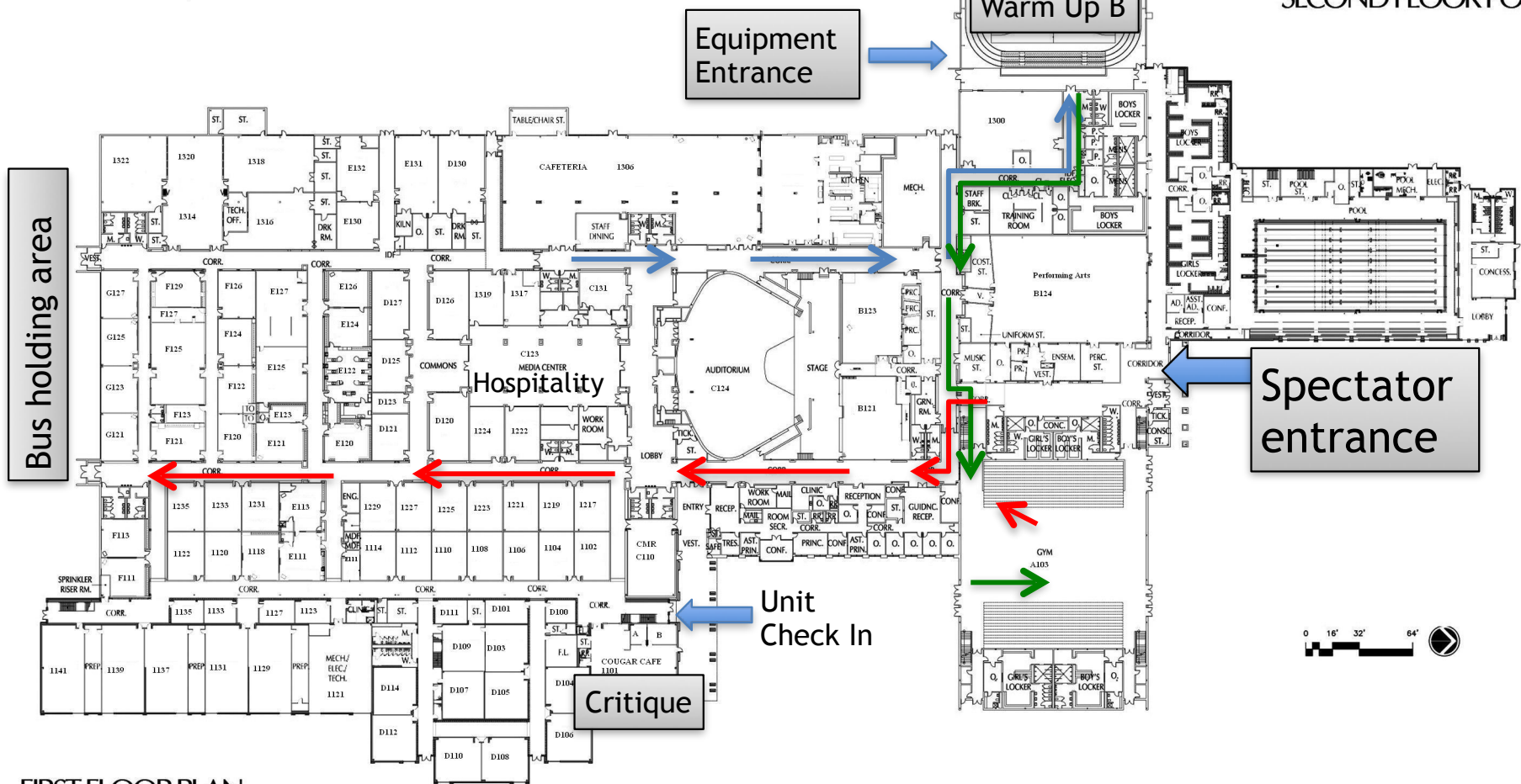


SECOND FLOOR ACADEMIC ADDITION

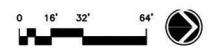
To Warm Up  
 To Performance  
 To Reloading



SECOND FLOOR POOL ADDITION



FIRST FLOOR PLAN







## Indianapolis Regional Competition Area Greenfield Central HS, Greenfield, IN

All WGI contest sites must have a minimum of seventy by one hundred feet (70' x 100') to accommodate a "safety zone" of five (5) feet from any spectator seating. If no spectators are seated on the left and right sides, then the safety zone will be eliminated on the left and right sides of the competition area and extend to the wall.

The "competition area" at this event measures 75'X100'. All performing groups must be prepared to perform within that area. Floors (tarps) may not extend into the safety zones per rules found in the WGI Adjudication Manual and Rulebook

