

# TROY PERCUSSION AND WINDS REGIONAL CONTEST INFORMATION

SATURDAY, FEBRUARY 8, 2020

---



## LOCATION

Troy Athens High School  
4333 John R. Road  
Troy, MI 48085

---

## EMERGENCY CONTACTS (DAY OF SHOW ONLY)

CONTEST ADMINISTRATOR: Benja Russell - 404-988-9393/ [benja@wgi.org](mailto:benja@wgi.org)  
EVENT PARTNER: Analiza Baikie 248-227-9253/ [analizabaikie@stockx.com](mailto:analizabaikie@stockx.com)  
EVENT PARTNER: Gina Miller 248-703-1355/ [ginamom92@gmail.com](mailto:ginamom92@gmail.com)

---

## JUDGE PANEL

Effect Music & Winds Music Analysis – Terry Sanders  
Effect Visual & Winds Overall Effect – John Howell  
Music – Mike Leitzke  
Visual & Winds Visual Analysis – Bret Mascaro  
T&P – Phil Tanner

---

## COMPETITIONSUITE DETAILS

ACCESSING YOUR GROUP - <https://help.competitionsuite.com/article/16-accessing-your-group>

ADDING YOUR STAFF - <https://help.competitionsuite.com/article/61-adding-staff-members>

ACCESSING COMMENTARY - <https://help.competitionsuite.com/article/17-accessing-commentary>

*Score Summary Sheets are also located in your CompetitionSuite account with your overall score.*

---

## ADDITIONAL REGIONAL INFO

WINDS PRELIMS LOGISTICAL SCHEDULE - [HTTPS://BIT.LY/372EHKc](https://bit.ly/372EHKc)

PERCUSSION PRELIMS LOGISTICAL SCHEDULE - [HTTPS://BIT.LY/2FW8DHg](https://bit.ly/2FW8DHg)

WINDS FINALS LOGISTICAL SCHEDULE - [HTTPS://BIT.LY/3AILMSA](https://bit.ly/3AILMSA)

PERCUSSION FINALS LOGISTICAL SCHEDULE - [HTTPS://BIT.LY/2Nxyv0k](https://bit.ly/2Nxyv0k)

REGIONAL REMINDERS - [HTTPS://WGI.ORG/WP-CONTENT/UPLOADS/2020/01/PERC.WINDSREGIONALREMINDERS.PDF](https://wgi.org/wp-content/uploads/2020/01/PERC.WINDSREGIONALREMINDERS.PDF)

Winter Guard International, Inc.  
2405 Cross Pointe Drive, Miamisburg, OH 45342/ Phone: 937-247-5919/ Fax: 937-247-9212/ Email: [office@wgi.org](mailto:office@wgi.org) Web: <http://wgi.org>

20 WGI  
20 I AM WGI



# JOIN THE TROY PERC REGIONAL BAND!

## BAND

- Free all-in-one group communication platform.
- Share group announcements via push notification, text message or email.
- Robust group calendar and membership management.
- Customizable to your unique communication needs.
- Available for your mobile device and desktop.

## BAND LINK:

<https://band.us/n/a9a825K1Ff156>

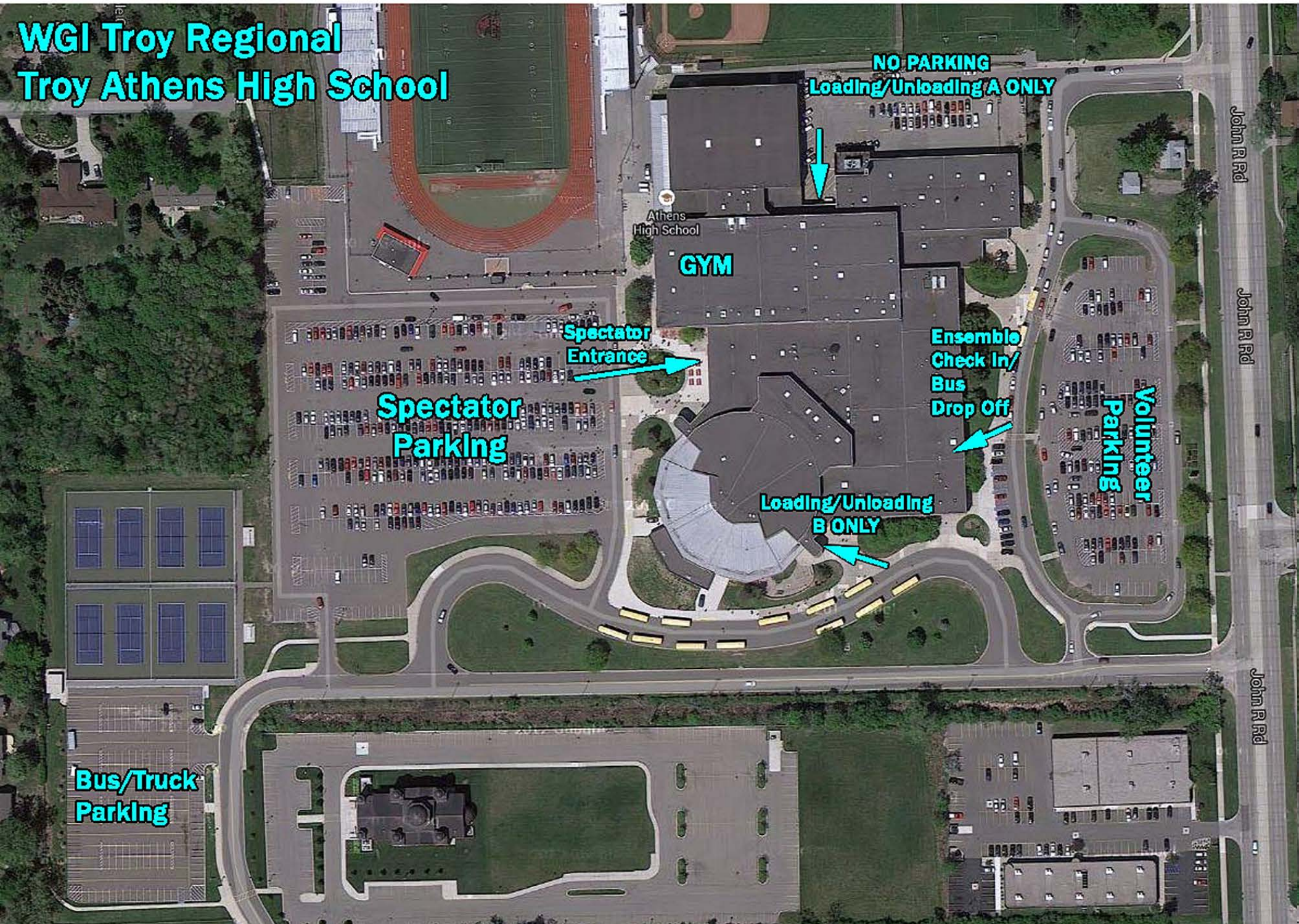
- 1 Go to the Apple App Store or Google Play Store, search for BAND and download.
- 2 Sign up using your phone number, email, Facebook account or Google account.
- 3 Scan the QR code or use the link below to join the BAND.



#WGI2020

#IAMWGI

# WGI Troy Regional Troy Athens High School



**NO PARKING  
Loading/Unloading A ONLY**

**GYM**

Athens  
High School

**Spectator  
Entrance**

**Spectator  
Parking**

**Ensemble  
Check In/  
Bus  
Drop Off**

**Loading/Unloading  
B ONLY**

**Volunteer  
Parking**

**Bus/Truck  
Parking**

John R Rd

John R Rd

John R Rd

# Athens High School - First Floor

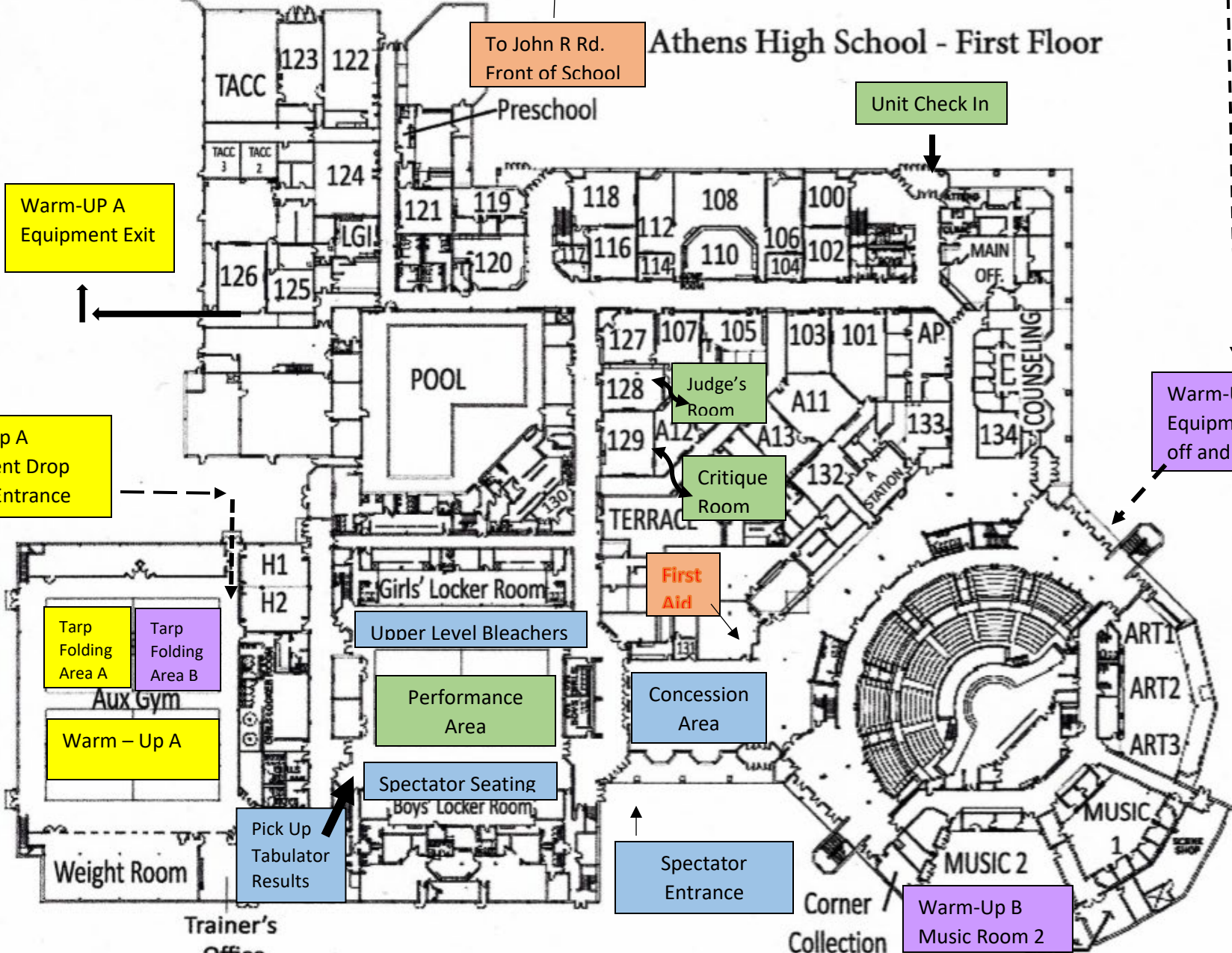
To John R Rd.  
Front of School

Unit Check In

Warm-UP A  
Equipment Exit

Warm-Up A  
Equipment Drop  
off and Entrance

Warm-Up B  
Equipment Drop  
off and Entrance



↑  
TO JOHN R

# Athens High School - First Floor

**GROUP A MAP**  
PERFORMANCE  
ENTRANCE AND EXIT  
ROUTE

MAIN ENTRANCE  
↓

To Warm-Up

Equipment Out  
Group A

Enter Tarp Folding  
& Warm - Up A thru  
Aux Gym

Equipment In  
Tarp In and Out

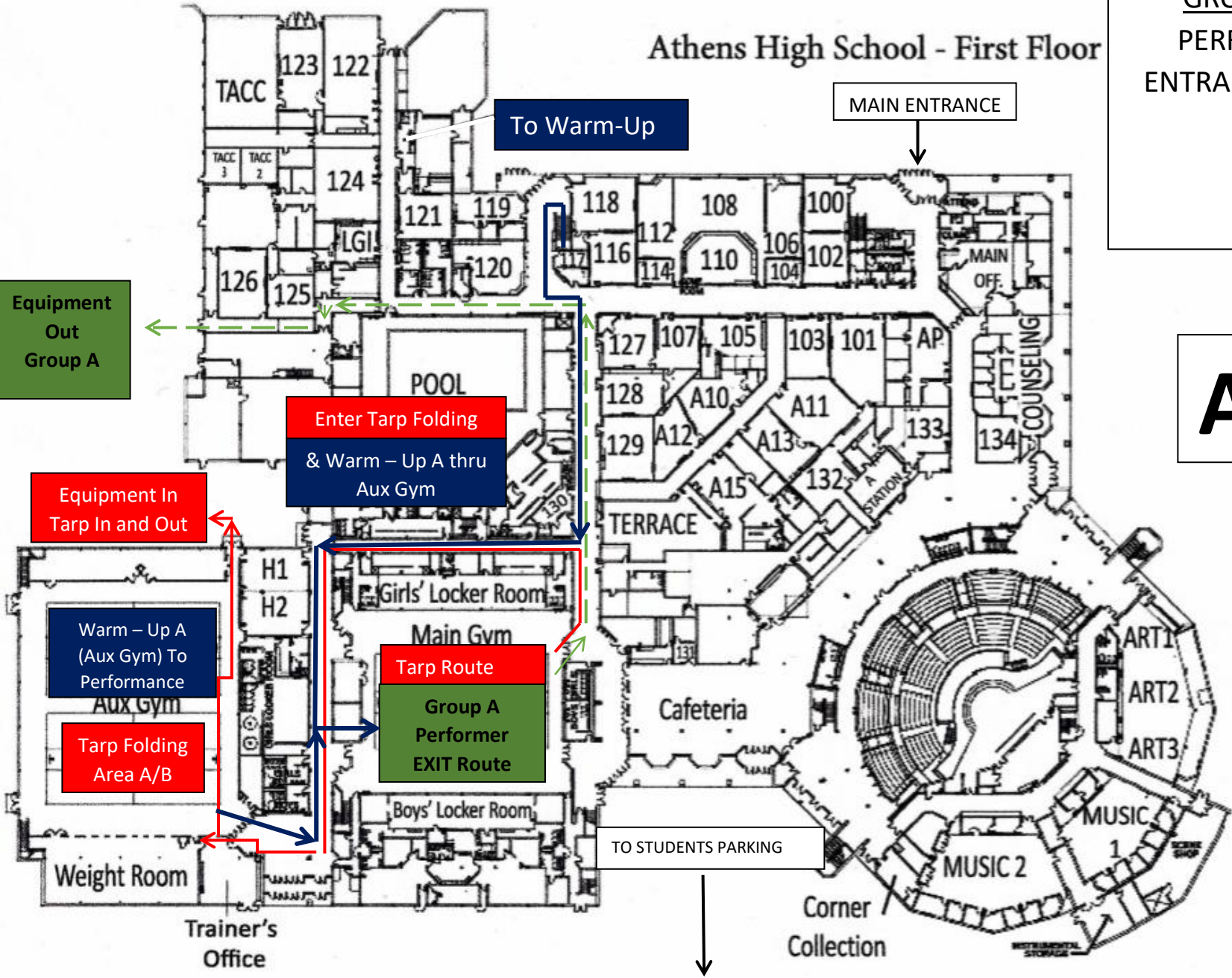
Warm - Up A  
(Aux Gym) To  
Performance

Tarp Folding  
Area A/B

Tarp Route  
Group A  
Performer  
EXIT Route

TO STUDENTS PARKING  
↓

**A**



TO JOHN R

# Athens High School - First Floor

MAIN ENTRANCE

## GROUP B MAP

PERFORMANCE  
ENTRANCE AND EXIT  
ROUTE

B

Equipment  
Unload / Load  
Group B

Enter Tarp Folding  
thru Aux Gym

Tarp Folding  
Area A/B

Tarp Route

Group B  
Performance  
Exit Route

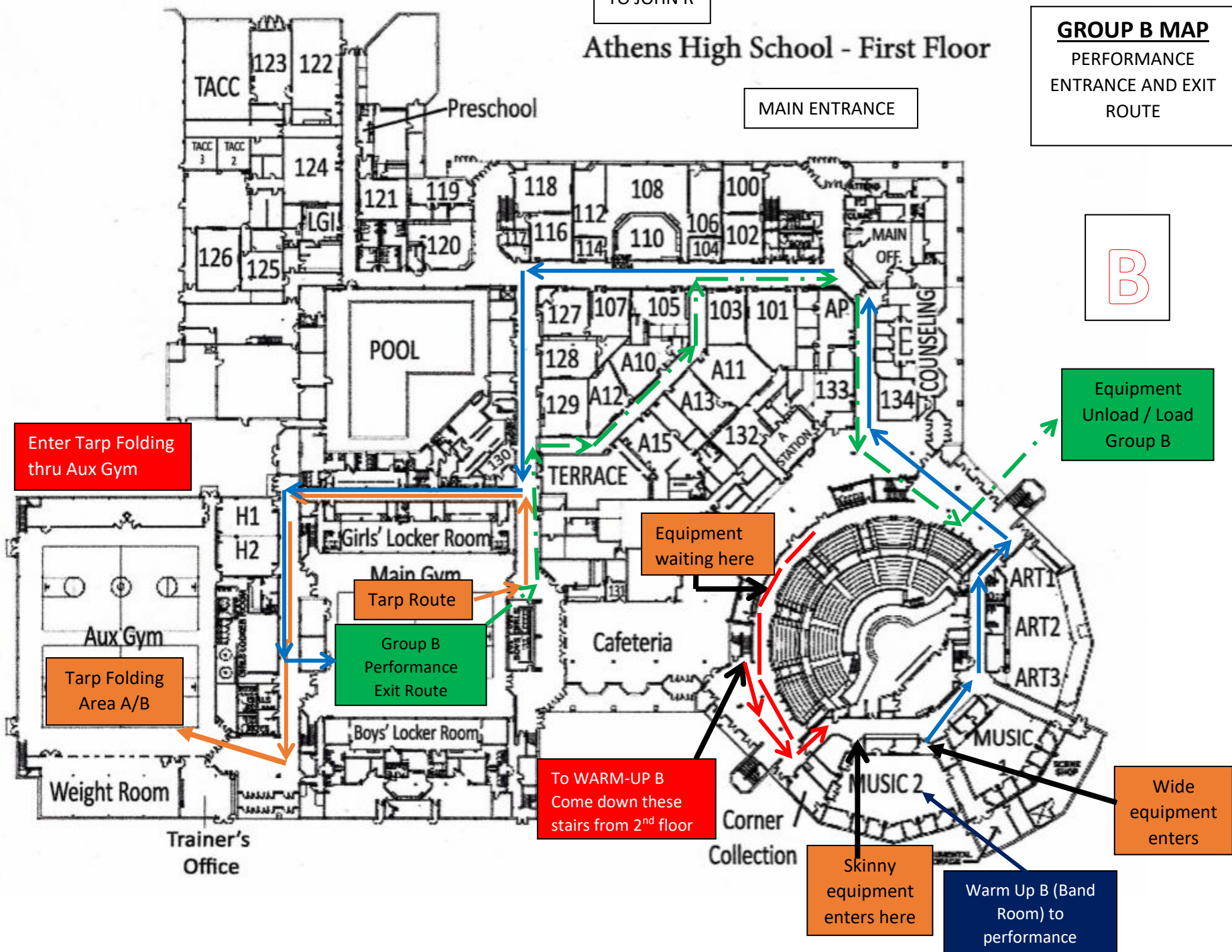
Equipment  
waiting here

To WARM-UP B  
Come down these  
stairs from 2<sup>nd</sup> floor

Skinny  
equipment  
enters here

Warm Up B (Band  
Room) to  
performance

Wide  
equipment  
enters





## Troy Regional Competition Area Troy Athens High School, Troy, MI

All WGI contest sites must have a minimum of seventy by one hundred feet (70' x 100') to accommodate a "safety zone" of five (5) feet from any spectator seating. If no spectators are seated on the left and right sides, then the safety zone will be eliminated on the left and right sides of the competition area and extend to the wall.

The "competition area" at this event measures 71'X100'. All performing groups must be prepared to perform within that area. Floors (tarps) may not extend into the safety zones per rules found in the WGI Adjudication Manual and Rulebook

