



IMPORTANT HEALTH & SAFETY UPDATES

MASKS REQUIRED

WGI TROY PERCUSSION & WINDS REGIONAL

EVERYONE IN ATTENDANCE AT THIS REGIONAL MUST WEAR A MASK.

Performers may remove their mask while in warm up and while on the performance floor but must wear their mask at all other times in the building. Everyone else with the group must remain masked at all times.

Those who choose not to follow this mask mandate may be asked to leave without a refund or the group may be disqualified.

THERE COULD BE DIFFERENT PROTOCOLS AT EACH WGI EVENT, PLEASE READ THROUGH ALL INFORMATION CAREFULLY.

TROY PERCUSSION AND WINDS REGIONAL CONTEST INFORMATION

SATURDAY, FEBRUARY 12, 2022



LOCATION

Troy Athens High School
4333 John R. Road
Troy, MI 48085

EMERGENCY CONTACTS (DAY OF SHOW ONLY)

CONTEST ADMINISTRATOR: BENJA RUSSELL – 404.988.9393 / BENJA@WGI.ORG
EVENT PARTNER: GINA MILLER – 248.703.1355 / GINAMILLERTABB@GMAIL.COM

JUDGE PANEL

Effect Music & Winds Music Analysis – Ted Mascari
Effect Visual & Winds Overall Effect – Frank Miller
Music – Lee Beddis
Visual & Winds Visual Analysis – Ken Giese
T&P – Phil Tanner

COMPETITIONSUITE DETAILS

ACCESSING YOUR GROUP - <https://help.competitionsuite.com/article/16-accessing-your-group>

ADDING YOUR STAFF - <https://help.competitionsuite.com/article/61-adding-staff-members>

ACCESSING COMMENTARY - <https://help.competitionsuite.com/article/17-accessing-commentary>

Score Summary Sheets are also located in your CompetitionSuite account with your overall score.

ADDITIONAL REGIONAL INFO

PRELIMS LOGISTICAL SCHEDULE – [HTTPS://TINYURL.COM/2P86SX9Y](https://tinyurl.com/2P86SX9Y)

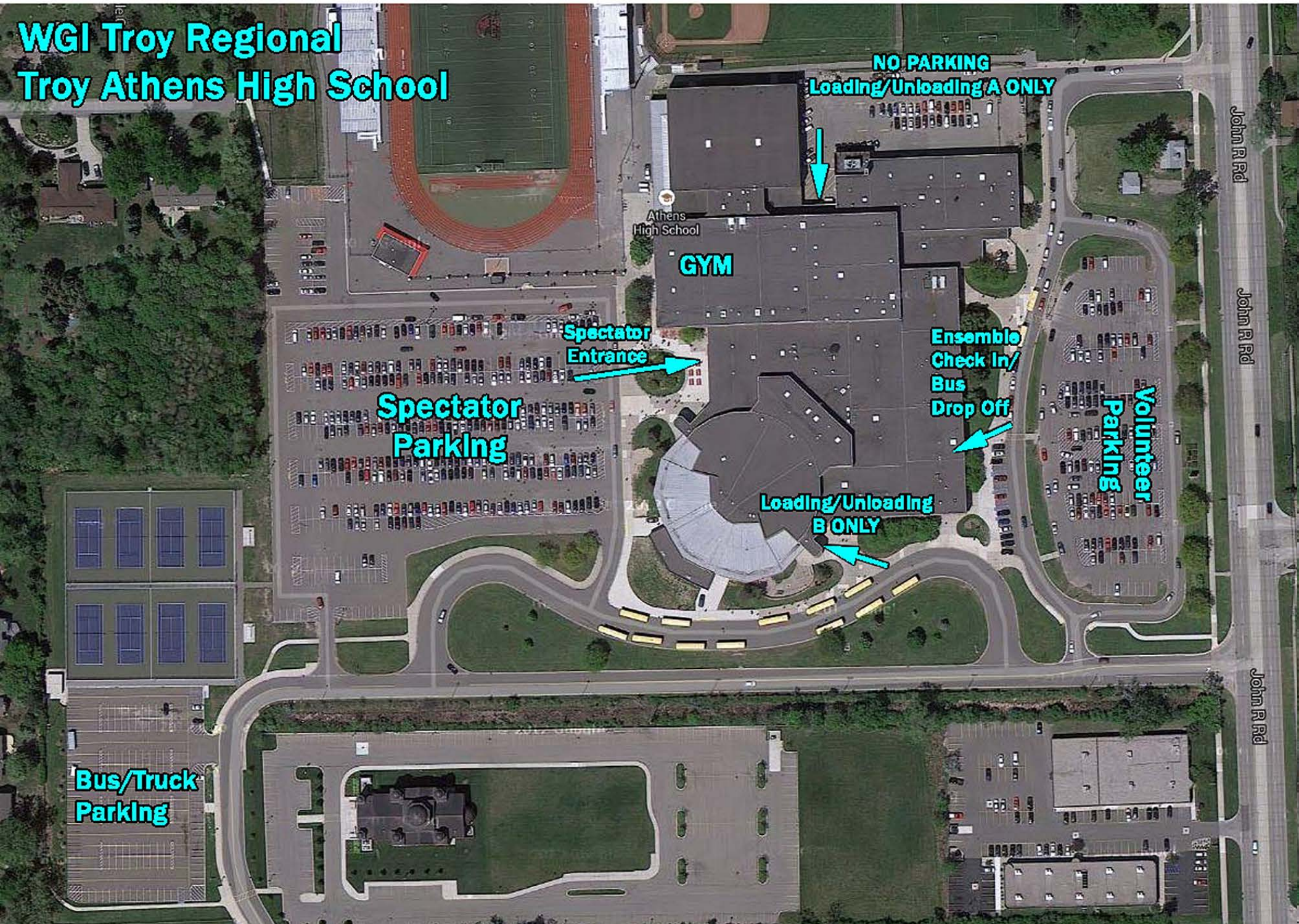
FINALS LOGISTICAL SCHEDULE – [HTTPS://TINYURL.COM/6H8FN3NP](https://tinyurl.com/6H8FN3NP)

CRITIQUE – TWO (2) STAFF MEMBERS PER GROUP ARE ALLOWED IN THE CRITIQUE ROOM. MASKS ARE REQUIRED.

RETREAT – EACH GROUP MAY DESIGNATE ONE INDIVIDUAL TO REPRESENT THE GROUP ON THE FLOOR DURING RETREAT. IF YOUR GROUP IS NOT ATTENDING RETREAT, PLEASE DESIGNATE ONE INDIVIDUAL (PARENT, STAFFER, OR DESIGNATED REPRESENTATIVE) TO STAY AND RETRIEVE YOUR AWARD AT THE CONCLUSION OF RETREAT. PLEASE INFORM THE CONTEST ADMINISTRATOR ON SITE IF YOUR GROUP WILL NOT BE ATTENDING RETREAT.

REGIONAL REMINDERS - <https://wgi.org/wp-content/uploads/2022/01/2022-Perc-WindsRegionalReminders.pdf>

WGI Troy Regional Troy Athens High School



**NO PARKING
Loading/Unloading A ONLY**

GYM

Athens
High School

**Spectator
Entrance**

**Spectator
Parking**

**Ensemble
Check In/
Bus
Drop Off**

**Loading/Unloading
B ONLY**

**Volunteer
Parking**

**Bus/Truck
Parking**

John R Rd

John R Rd

John R Rd

Athens High School - First Floor

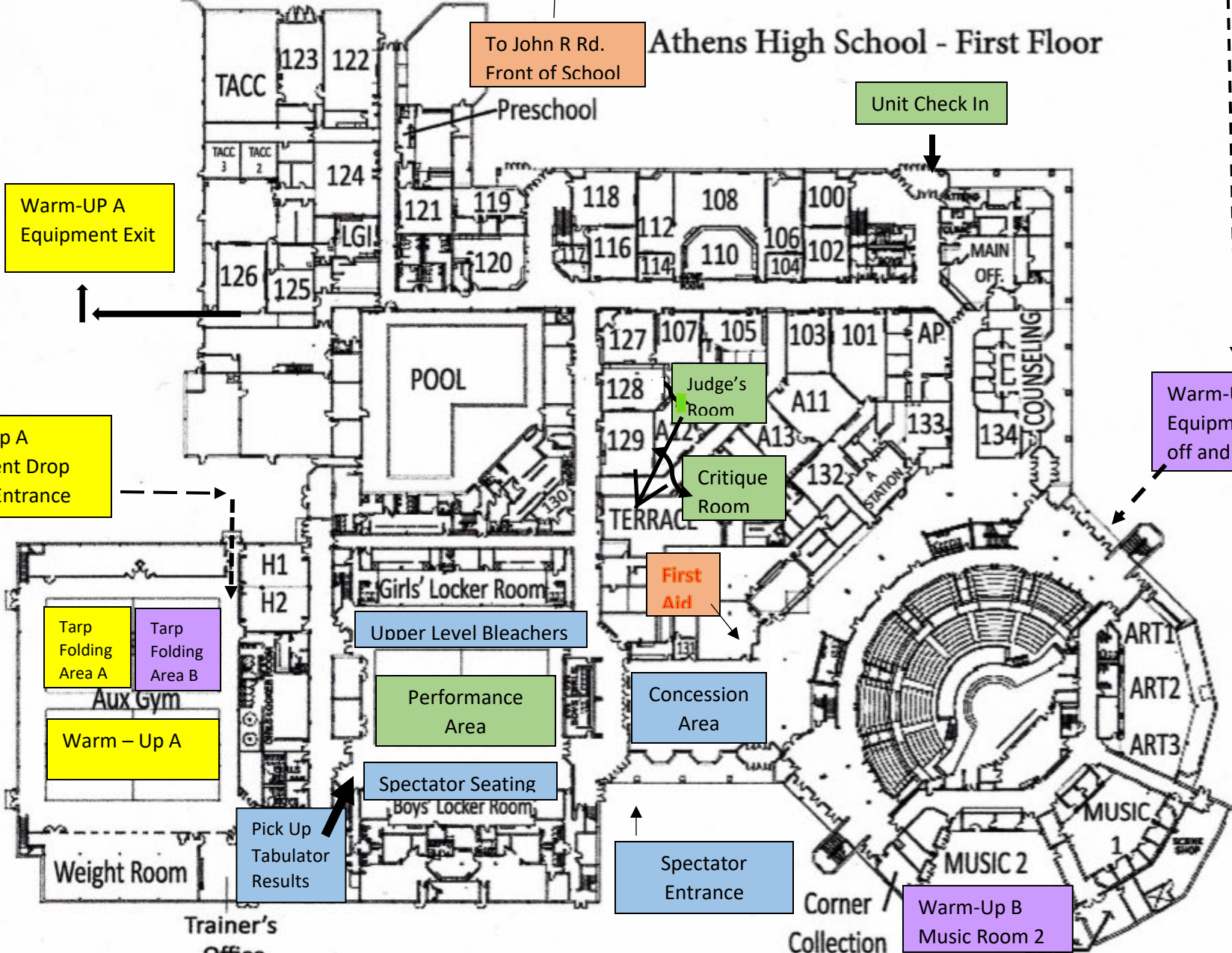
To John R Rd.
Front of School

Unit Check In

Warm-UP A
Equipment Exit

Warm-Up A
Equipment Drop
off and Entrance

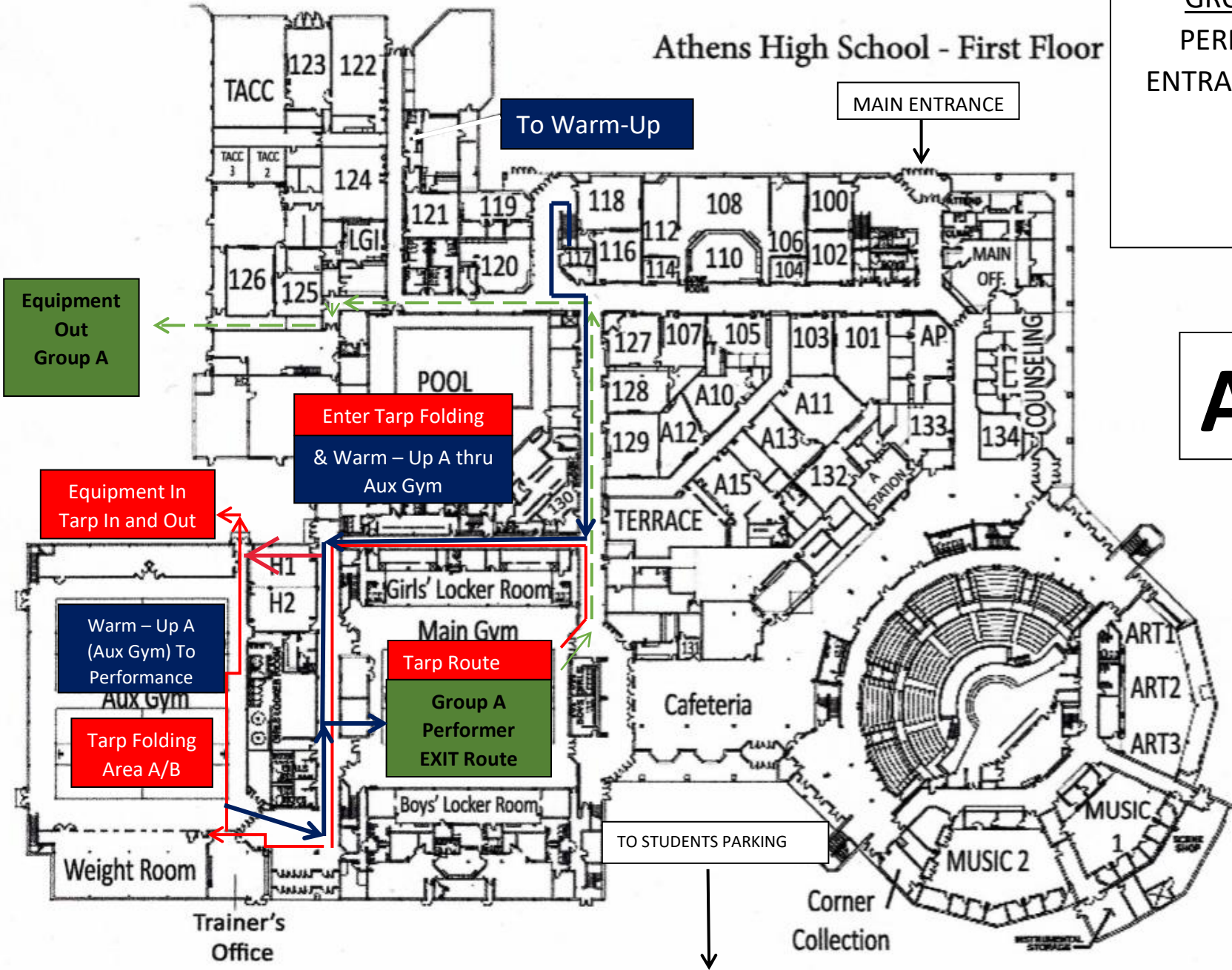
Warm-Up B
Equipment Drop
off and Entrance



**NOTE: Carts are not allowed through Room H1.

↑
TO JOHN R

GROUP A MAP
PERFORMANCE
ENTRANCE AND EXIT
ROUTE



A

****NOTE:** Carts are not allowed through Room H1.

RED arrows indicate route to WARM UP from upstairs hall.

BLUE arrows indicate route from Warm Up to PERFORMANCE.

GREEN arrows indicate route from PERFORMANCE TO LOAD.

ORANGE arrows indicate TARP route ONLY

TO JOHN R

Athens High School - First Floor

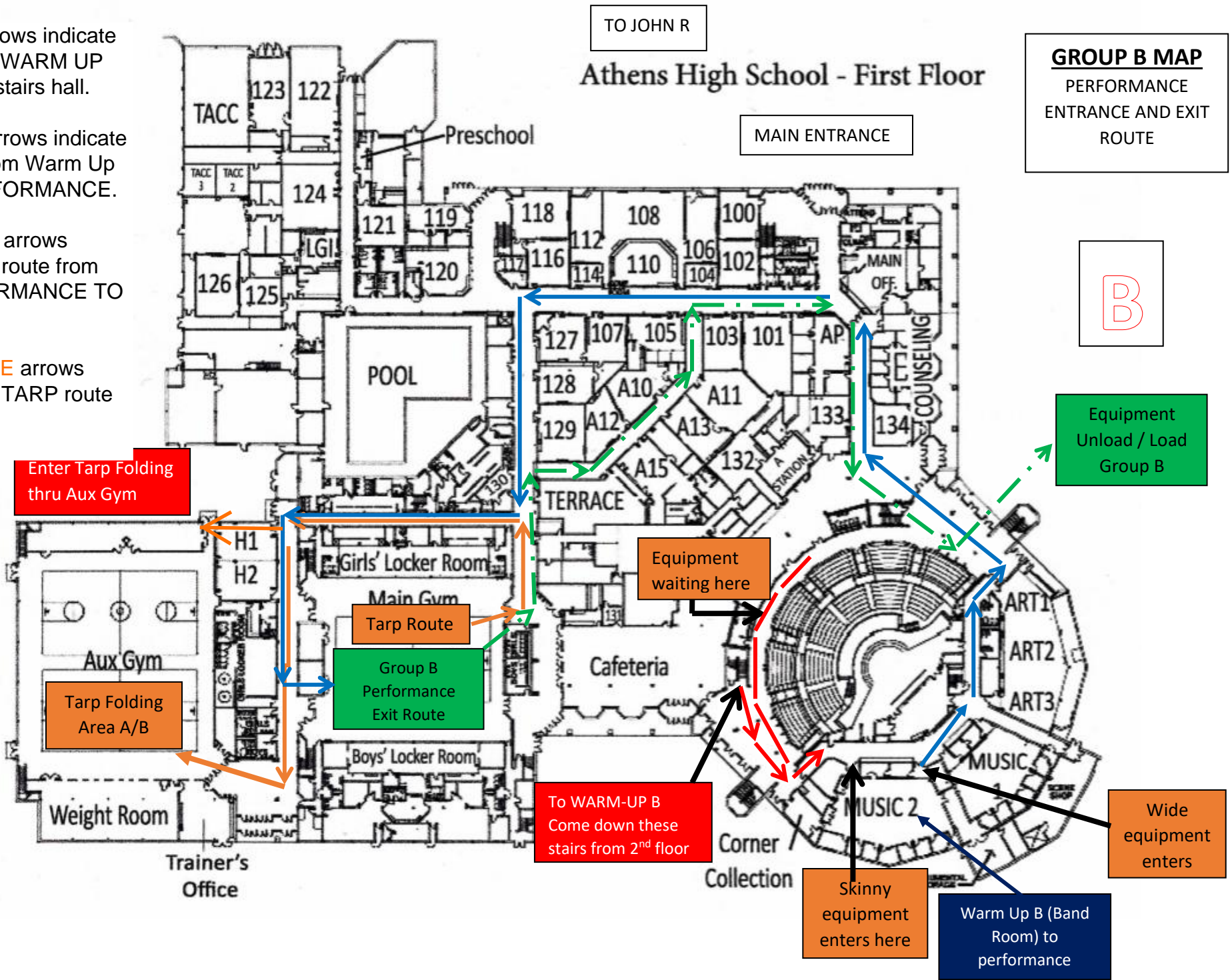
MAIN ENTRANCE

GROUP B MAP

PERFORMANCE
ENTRANCE AND EXIT
ROUTE

B

Equipment
Unload / Load
Group B



Enter Tarp Folding thru Aux Gym

Tarp Folding Area A/B

Tarp Route

Group B Performance Exit Route

Equipment waiting here

To WARM-UP B
Come down these stairs from 2nd floor

Skinny equipment enters here

Warm Up B (Band Room) to performance

Wide equipment enters

H1
H2

Trainer's Office

Girls' Locker Room

Main Gym

Boys' Locker Room

Cafeteria

TERRACE

Corner Collection

MUSIC

MUSIC 2

ART1

ART2

ART3

AP
COUNSELING

MAIN OFF.

Preschool

TACC

TACC 3
TACC 2

123

122

124

LGI

121

119

126

125

118

108

100

117

116

112

110

106

102

127

107

105

103

101

128

A10

A11

129

A12

A13

132

A STATION

133

134

130

Wide equipment enters

Skinny equipment enters here

Warm Up B (Band Room) to performance

To WARM-UP B
Come down these stairs from 2nd floor

Equipment waiting here

Tarp Route

Group B Performance Exit Route

Tarp Folding Area A/B

Enter Tarp Folding thru Aux Gym



Troy Regional Competition Area Troy Athens High School, Troy, MI

All WGI contest sites must have a minimum of seventy by one hundred feet (70' x 100') to accommodate a "safety zone" of five (5) feet from any spectator seating. If no spectators are seated on the left and right sides, then the safety zone will be eliminated on the left and right sides of the competition area and extend to the wall.

The "competition area" at this event measures 71'X100'. All performing groups must be prepared to perform within that area. Floors (tarps) may not extend into the safety zones per rules found in the WGI Adjudication Manual and Rulebook

